

An abstract painting featuring a vibrant green and blue textured surface. The composition is dominated by a large, flowing shape that transitions from a deep green on the left to a lighter, more yellowish-green on the right. The surface is covered in numerous small, white, speck-like marks, giving it a granular or crystalline appearance. The overall effect is one of organic movement and depth, reminiscent of a close-up of a natural material like coral or a microscopic view of a mineral. The name 'Jim Whitty' is written in white text on the right side of the image.

Jim Whitty

a d a m gallery

Jim Whitty

'Water and Light'

13 JOHN STREET BATH BA1 2JL t: 01225 480406

e: info@adamgallery.com www.adamgallery.com

'Water and Light'

Water and light are the very essence of life, and the way in which they interact is completely mesmerizing. The constant motion and refracting, reflecting nature of water makes light dance, bringing it to life in a way that nothing else in the world of solid reality does. This entangled relationship is changed further by water's surroundings as it journeys through the world in a state of continual evolution. As it hangs weightless in the air, cascades down a mountainside, surges in turbid flood across the earth, dissipates into the salty sea to be-calmed or whipped up by the wind, it takes on very different properties that can evoke very strong emotions in us as we experience them. Its ever-changing moods are woven throughout mankind's spiritual experience of the world and are a deep running source of nurture to the soul. It revives with its cleansing qualities as we both drink and wash in it, while the weightless feeling of swimming and floating in water sets us free from gravity's reality – an experience that can totally refresh the spirit. When we want to escape, water in its many different shapes is where we most often go. The sea and sound of waves on a shore evokes such happy memories in so many of us that it becomes a well of hope and optimism that we can draw on when the daily grind gets too much.

With these paintings, I have set out to try to capture water's vitality and energy. Painting its elusive transient qualities is not always easy, and I have tried to reflect its constant variation by using paint in different ways. From the crystal cascade of a mountain stream to the rhythm, movement and sound of the waves, I have used different scales and energy of marks to try to express some of its many different moods. I feel that I have only just scratched the surface of such a large and diverse subject matter, so this show is just a chapter of an ongoing journey.

Jim Whitty



1. Mountain Stream oil on canvas 83 x 120 cm



2. Rolling in oil on canvas 80 x 140 cm



3. The Sea oil on canvas 160 x 225 cm



4. Cosmic Backwater oil on canvas 100 x 140 cm



5. Water Window oil on canvas 140 x 190 cm



6. Passage of Time oil on canvas 120 x 140 cm



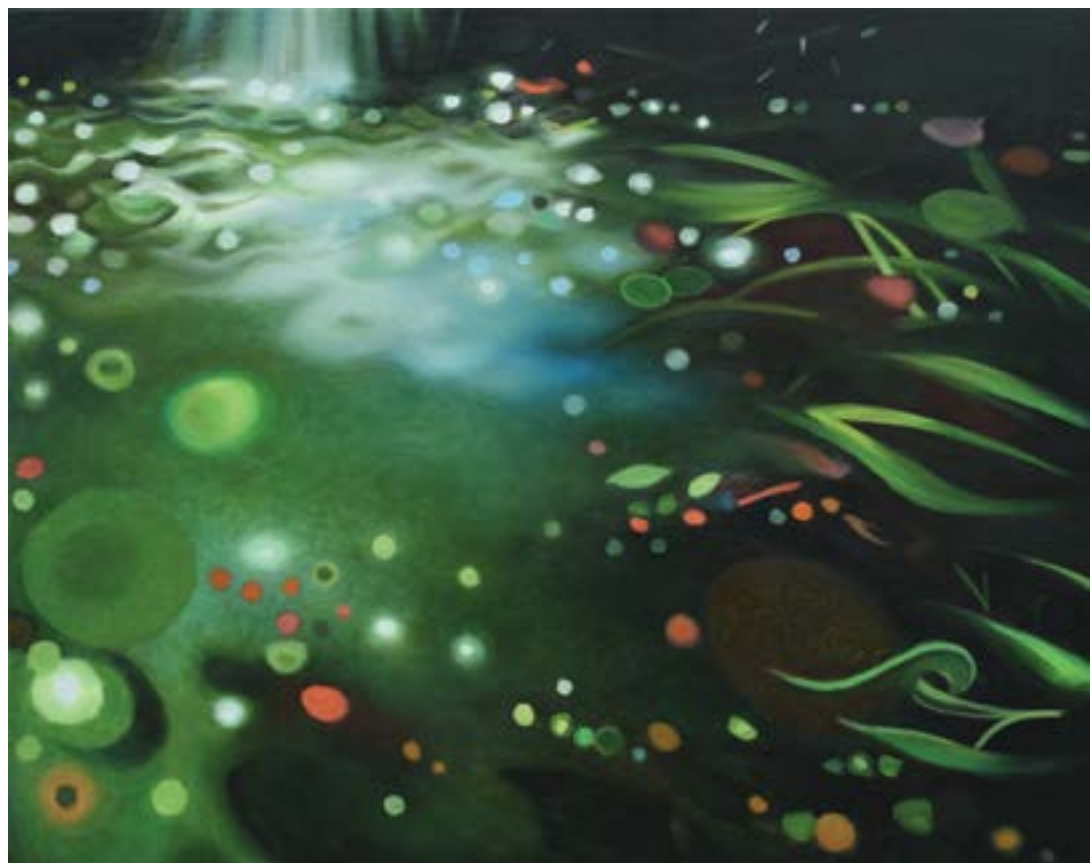
7. Breathe oil on canvas 140 x 190 cm



8. Drift oil on canvas 100 x 120 cm



9. Warm Shallows oil on canvas 100 x 140 cm



10. The Edge of the Flow oil on canvas 80 x 100 cm



11. Float oil on canvas 140 x 190 cm



12. Dive In oil on canvas 75 x 90 cm



13. The Turmoil of the Shadows oil on canvas 100 x 140 cm



14. Pallet 83 oil on canvas 30 x 40 cm



15. Pallet 82 oil on canvas 30 x 40 cm



16. Shwimmer oil on canvas 140 x 190 cm



17. Aquamist oil on canvas 80 x 100 cm



18. Exuberance oil on canvas 140 x 190 cm



19. The Sound of the Waves oil on canvas 140 x 190 cm

Selected Exhibitions:

Adam Gallery Bath 2015, 2017
 Wylve Valley Art Trail 2009, 2011, 2013, 2015, 2017
 Black Swan Arts, Frome 2014, 2016
 Adam Gallery Cork St. & Bath 2009, 2010, 2013
 Art Toronto, Canada 2011
 Farrington Contemporary Gibraltar solo show 2009
 Cadogan Contemporary. London. 2002, 04, 05, 07, 08
 Curated & exhibited 'Lambda', Rhythm Factory. E1 2001
 Mural Commission for HMS President, London 2000
 International Art Consultants, London E1 2000, 01, 02
 An Tuireann Arts Centre, Isle of Skye. 1999
 The City Gallery, London. EC2. 1999
 The Barbican VSO Show London 1998
 The Rack Gallery, Tyers Gate, London. SE1. 1998
 106 Gallery, Sclater st. London. E1, 1998
 Watermans Art Centre 1997
 Cadogan Contemporary. Group shows. 1997- 08
 Will's Art, Fulham, London. 1997- 03.
 Video Installation, Costa Caparica, Portugal. 1996
 Animation Festival, Bremen & Hamburg, Germany 1996
 Royal Society of Arts Student Show, Edinburgh 1994
 Permanent Collection of the Paisley Art Institute 1993

a d a m gallery

www.adamgallery.com

13 JOHN STREET BATH

BA1 2JL

t: 01225 480406