



adam gallery

Jim Whitty

a d a m gallery

Jim Whitty

Vallis

13 JOHN STREET BATH BA1 2JL t: 01225 480406

e: info@adamgallery.com www.adamgallery.com

Vallis

This series of paintings continue my explorations of the ways of paint and the local Somerset landscape, focusing on the beautiful wooded valley of Vallis Vale, near Frome. It is a place that I never tire of, constantly surprising me with undiscovered secret paths, which can lead under a fence into a hay field, or end at a precarious makeshift camp perched on the cliff edge of an abandoned quarry looking out above the tree canopy. It is a place that has layers of industrial, and geological heritage that have been reclaimed by nature. Steep wooded valley sides are criss-crossed by a myriad of tracks made by exploring kids and wild animals. Over time, the twisting paths of two streams, and the hands of forgotten quarrymen have shaped the vale into a series scooped out interconnected spaces that hold there own unique microcosms.

I am fascinated by the way that this unique landscape describes the space around us, providing pockets of distance that stretch away from the random jumble of trees, undergrowth, rocks and water. It is an environment that is spot lit by the sun, which picks out, in glorious riveting detail, the architectural splendour of a messy patch of weeds that the day before I might have walked straight past. It is a place constantly changing, but at several different speeds, as the spin of the earth creates circles within circles – from minute to minute, as clouds filter the light and the sun moves across the sky – from day to day, as different weather systems create different atmospheres – and over weeks as the slower turn of the seasons orchestrate the exuberant plant life.

I have tried to capture some of this variety through this series of paintings but feel I am still only scratching the surface. Different scenes evoke different reactions, sometimes I'm happy to represent it close to how I see it but on other days I want to push the paint around further, experiment with colour and perception to try to create an image that can break the boundaries of a specific moment in time. I don't know if I always succeed, but to strive for something that's just out of sight is all a part of the journey. Often a painting will take a turn in an unplanned direction, mistakes can lead to a different path taken, ending up at an interesting new place. Messing around with colour is a constant source delight for me and I have enjoyed breaking some of the rules in a couple of these paintings by getting out every colour in the box. I have tried to transmit some of the energy and vibration of life though the marks I make, the gradual progression of carefully placed marks are punctuated by a calligraphy of explosive scribbles. In the end, what motivates me most of all, is a simple desire to recreate the sense of wonder that I feel about this beautiful, transient, world around us.

Jim Whitty

1. The Start of Summer oil on canvas 140 x 140 cm





2. Where the Waters Meet oil on canvas 140 x 190, 140 x 100 cm



3. The Way Through oil on canvas 80 x 140 cm



4. Tangled Light oil on canvas 90 x 90 cm



5. Autumn Morning oil on canvas 100 x 140 cm



6. And on Again oil on canvas 140 x 190 cm



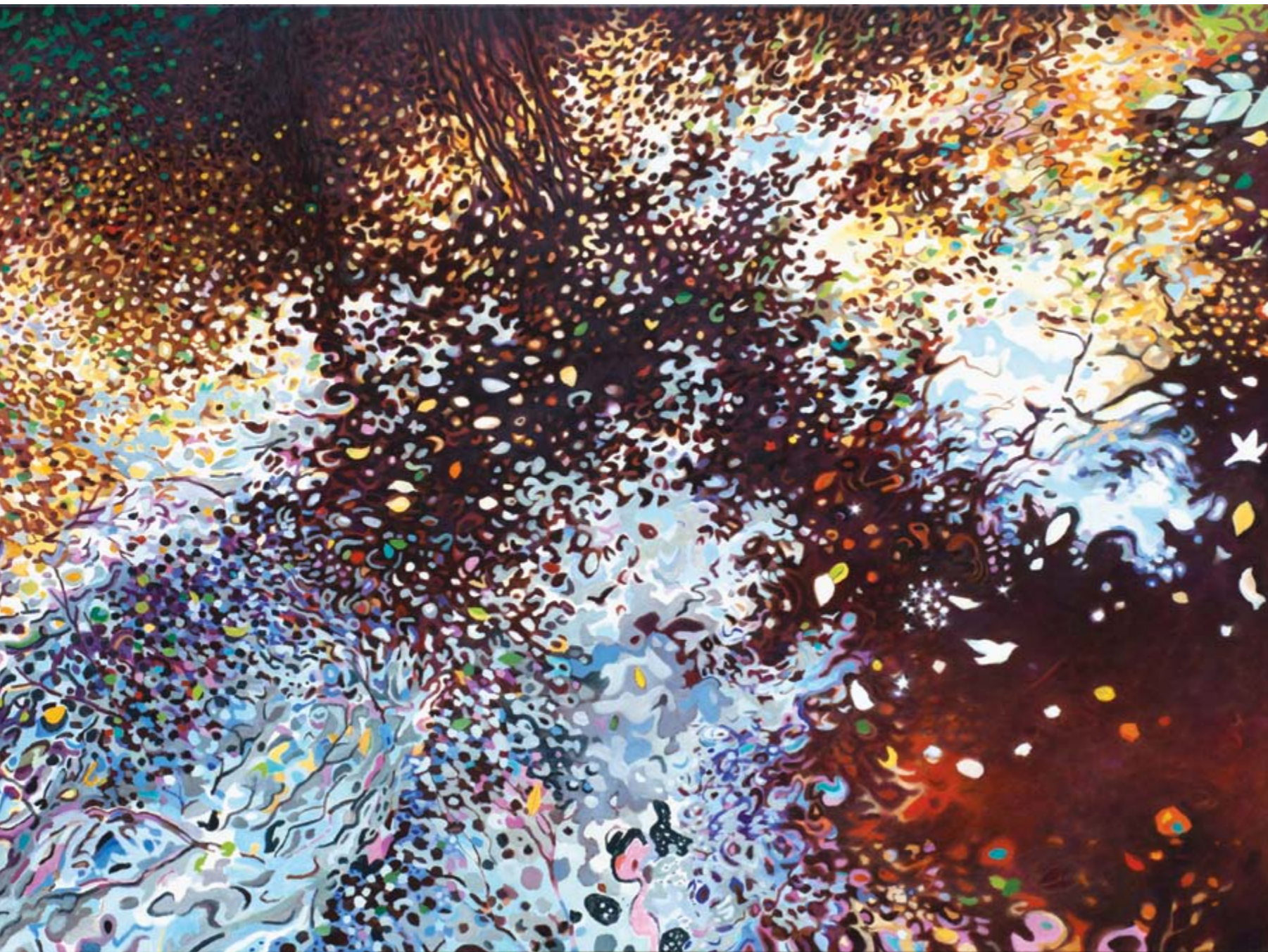
7. Pallet 68 (Moonrise) oil on canvas 30 x 40 cm



8. Pallet 66 (Riverbed) oil on canvas 30 x 40 cm



9. Wending Away oil on canvas 95 x 190 cm



10. Leaves in the Stream oil on canvas 140 x 190, 140 x 100 cm



11. Sweet Tangle oil on canvas 40 x 50 cm



12. As the Sun Drops oil on canvas 140 x 190 cm



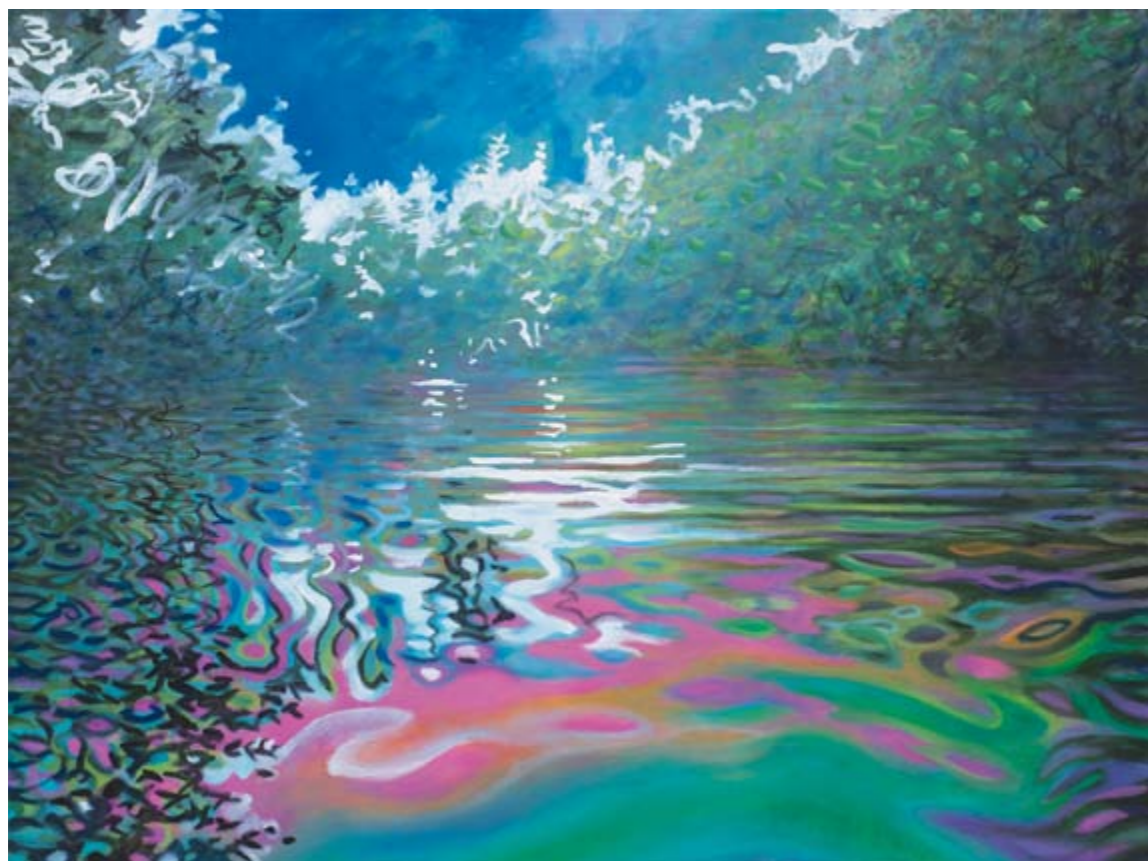
13. Pallet 62 (Glade) oil on canvas 26 x 30 cm



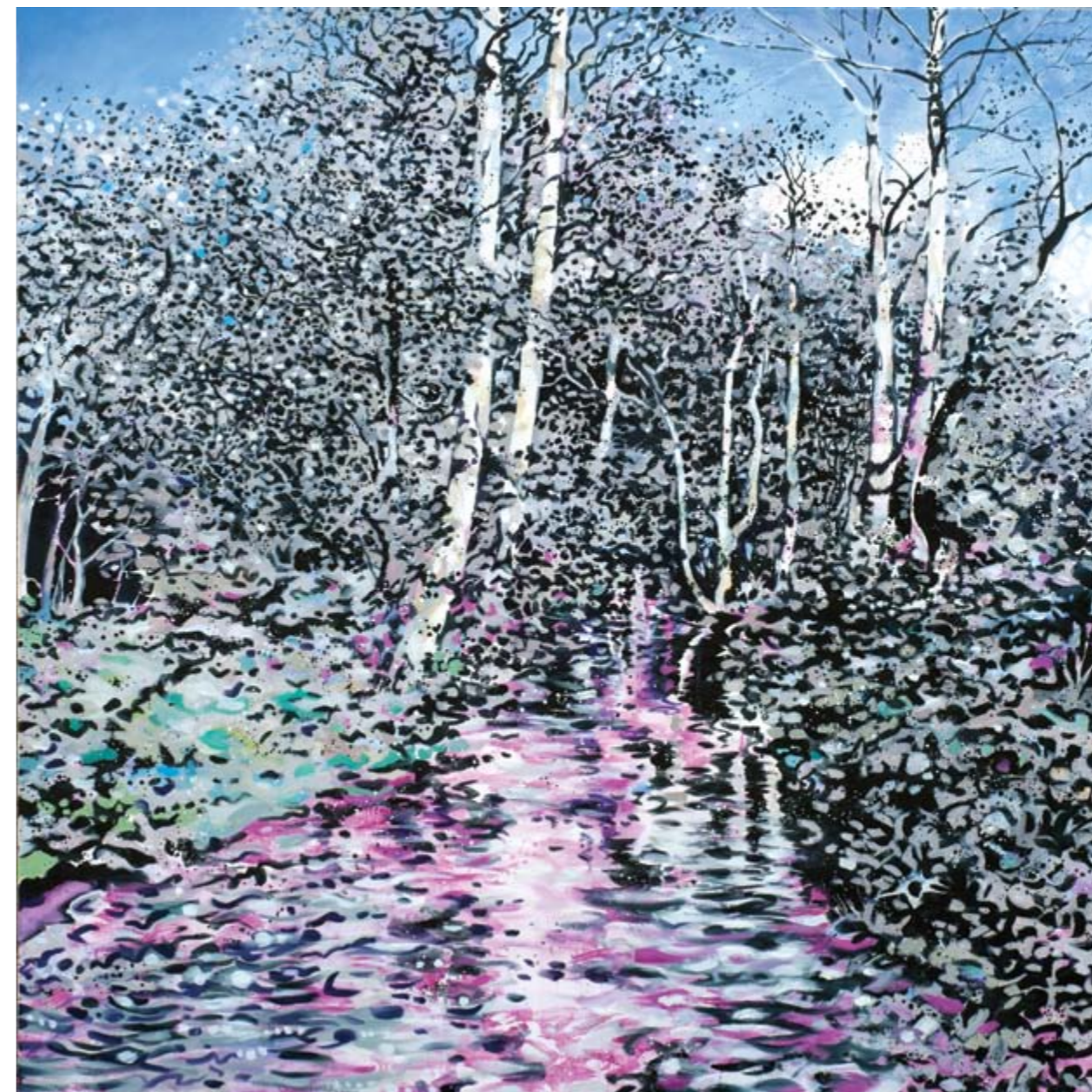
14. Pallet 65 (Reflections) oil on canvas 26 x 36 cm



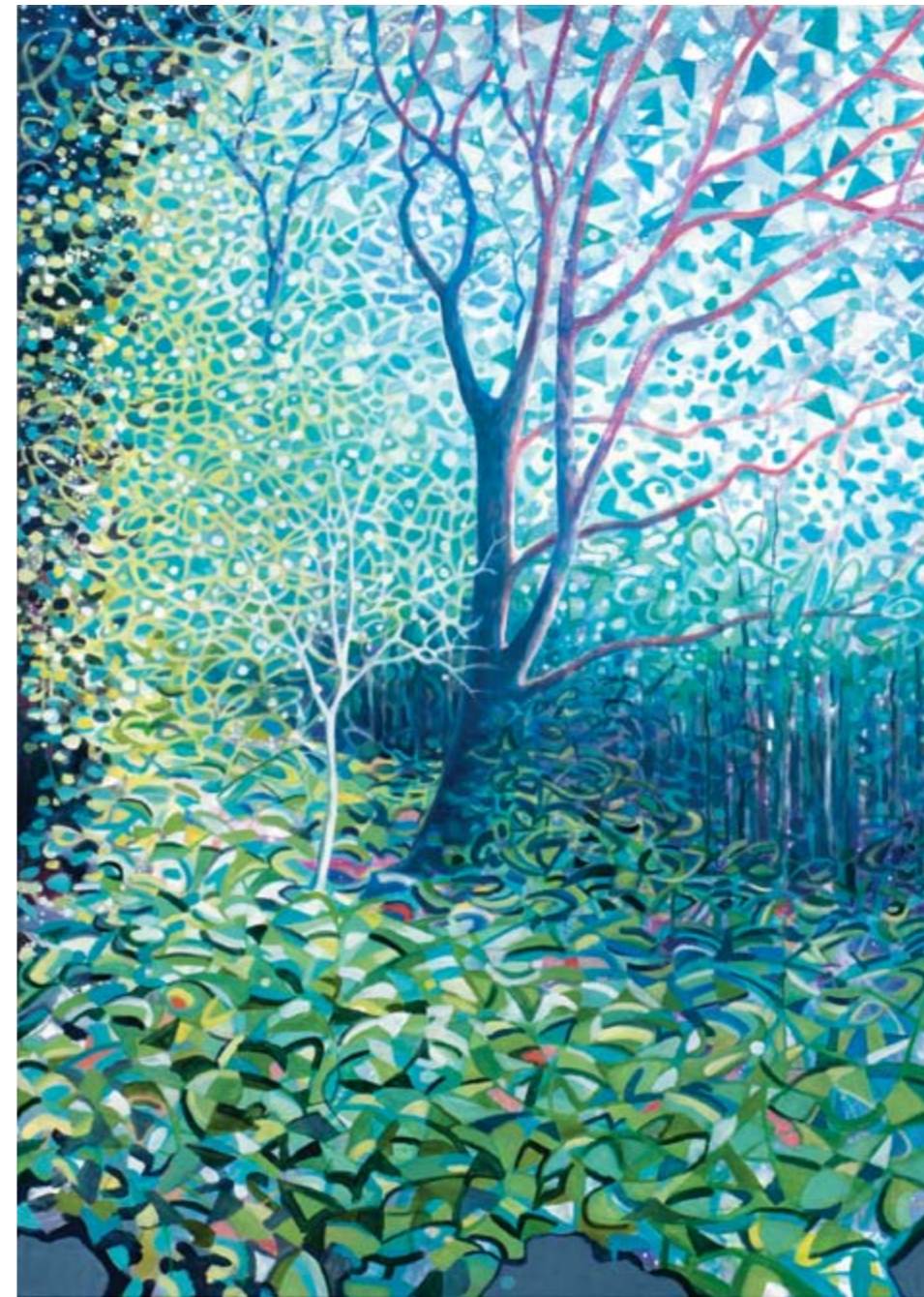
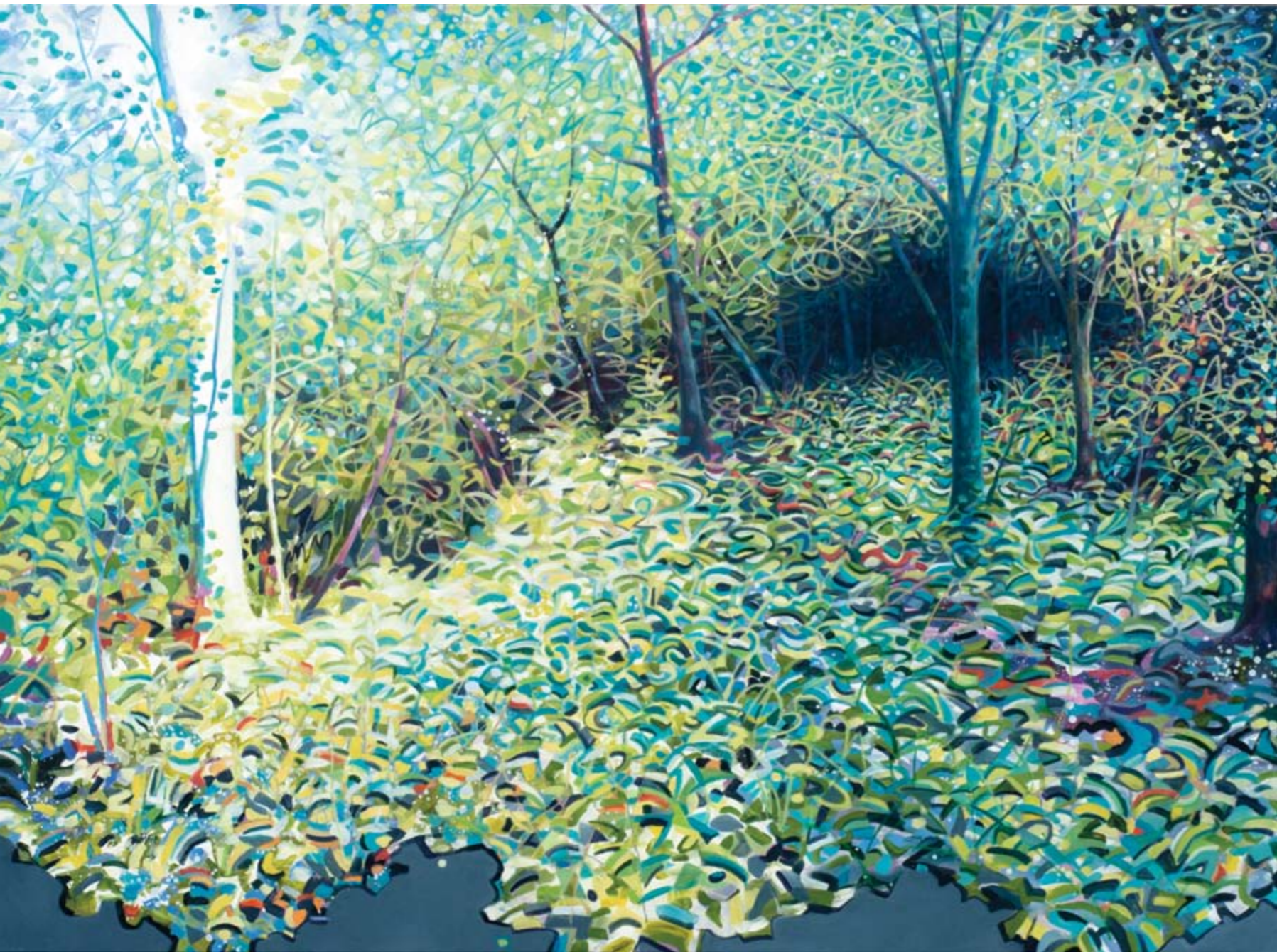
15. Sunlight and Cowparsley oil on canvas 80 x 100 cm



16. Summer Daze oil on canvas 60 x 80 cm



17. Pink River oil on canvas 140 x 140 cm



18. Wild Tracks oil on canvas 140 x 190, 140 x 100 cm



19. Pallet 72 (Hawthorn) oil on canvas 30 x 40 cm



20. Pallet 70 (Undergrowth) oil on canvas 30 x 40 cm



21. Pallet 69 (Trailing Branches) oil on canvas 30 x 40 cm



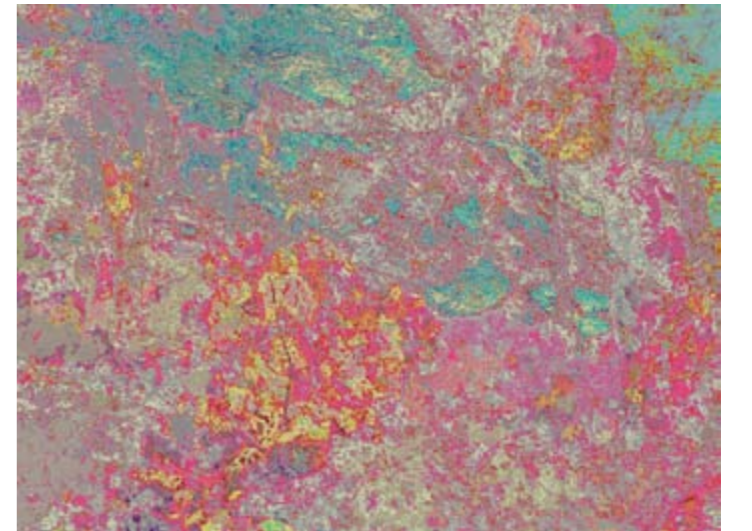
22. Pallet 67 (Quarry) oil on canvas 30 x 40 cm



23. The Unconformity – limited edition high definition Sublimation print on Aluminum – 75 x 100 cm



24. Digital Fragment III



25. Digital Fragment II

limited edition high definition Sublimation prints on Aluminum – 30 x 40 cm



26. Broken Circle oil on canvas 140 x 190 cm

Selected Exhibitions:

Adam Gallery Bath 2015
 Wylde Valley Art Trail 2009, 2011, 2013, 2015
 Black Swan Arts, Frome 2014
 Adam Gallery Cork St. & Bath 2009, 2010, 2013
 Art Toronto, Canada 2011
 Farrington Contemporary Gibraltar solo show 2009
 Cadogan Contemporary. London. 2002, 04, 05, 07, 08
 Curated & exhibited 'Lambda', Rhythm Factory. E1 2001
 Mural Commission for HMS President, London 2000
 International Art Consultants, London E1 2000, 01, 02
 An Tuireann Arts Centre, Isle of Skye. 1999
 The City Gallery, London. EC2. 1999
 The Barbican VSO Show London 1998
 The Rack Gallery, Tyers Gate, London. SE1. 1998
 106 Gallery, Sclater st. London. E1, 1998
 Watermans Art Centre 1997
 Cadogan Contemporary. Group shows. 1997- 08
 Will's Art, Fulham, London. 1997- 03.
 Video Installation, Costa Caparica, Portugal. 1996
 Animation Festival, Bremen & Hamburg, Germany 1996
 Royal Society of Arts Student Show, Edinburgh 1994
 Permanent Collection of the Paisley Art Institute 1993

a d a m gallery

www.adamgallery.com

13 JOHN STREET BATH

BA1 2JL

t: 01225 480406