



JIM WHITTY

a d a m g a l l e r y

**a d a m** gallery

JIM WHITTY

24 CORK STREET London W1S 3NJ t: 020 7439 6633

13 JOHN STREET Bath BA1 2JL t: 01225 480406

e: [info@adamgallery.com](mailto:info@adamgallery.com) [www.adamgallery.com](http://www.adamgallery.com)



# Trees, Rivers and Spirits

This series of paintings continue Jim’s ongoing exploration of the woods around his Somerset home. They are places of constantly shifting light and mood according to weather, time and season, and Jim has reflected this by using a variety of styles and colour pallets; some are finely drawn to create the endless detail of a forest scene, while others are loosely painted at speed to capture the energy of a sunlit spring morning.

There is a sense of ambiguity to many of these works; in some, the colours are pushed to hallucinatory levels, while others hint at an elusive narrative that is only half glimpsed through the trees, leading the viewer on, or drawing them back into the personal mythologies and tales of woods that we all carry with us from a very young age. Nothing is explained, and conclusions lead off in various directions, like the myriad of wild paths that wind through the forest.

But these paintings remain, largely, immersive visual impacts of colour and form, evocative of fleeting moments of wide eyed wonder, when an experience of nature can leave you feeling energized and glad to be alive.

Born in 1970 Jim Whitty grew up travelling. His father’s work with the British Council led him to he spent his childhood in Belgium, Nigeria, Malawi and Greece. Later he studied painting at Glasgow School of Art. where he ‘responded to the contrast between the city and the wilderness in the surrounding countryside’. Since that time he has exhibited widely in the UK and Europe and has work in many private and public collections.



1. Bridge oil on canvas 90 x 140 cm





2. Cern's Return oil on canvas 140 x 290 cm





3. The Stillness of a Summers Day oil on canvas 130 x 160 cm





4. Brook oil on canvas 140 x 190 cm





5. Falling oil on canvas 80 x 90 cm

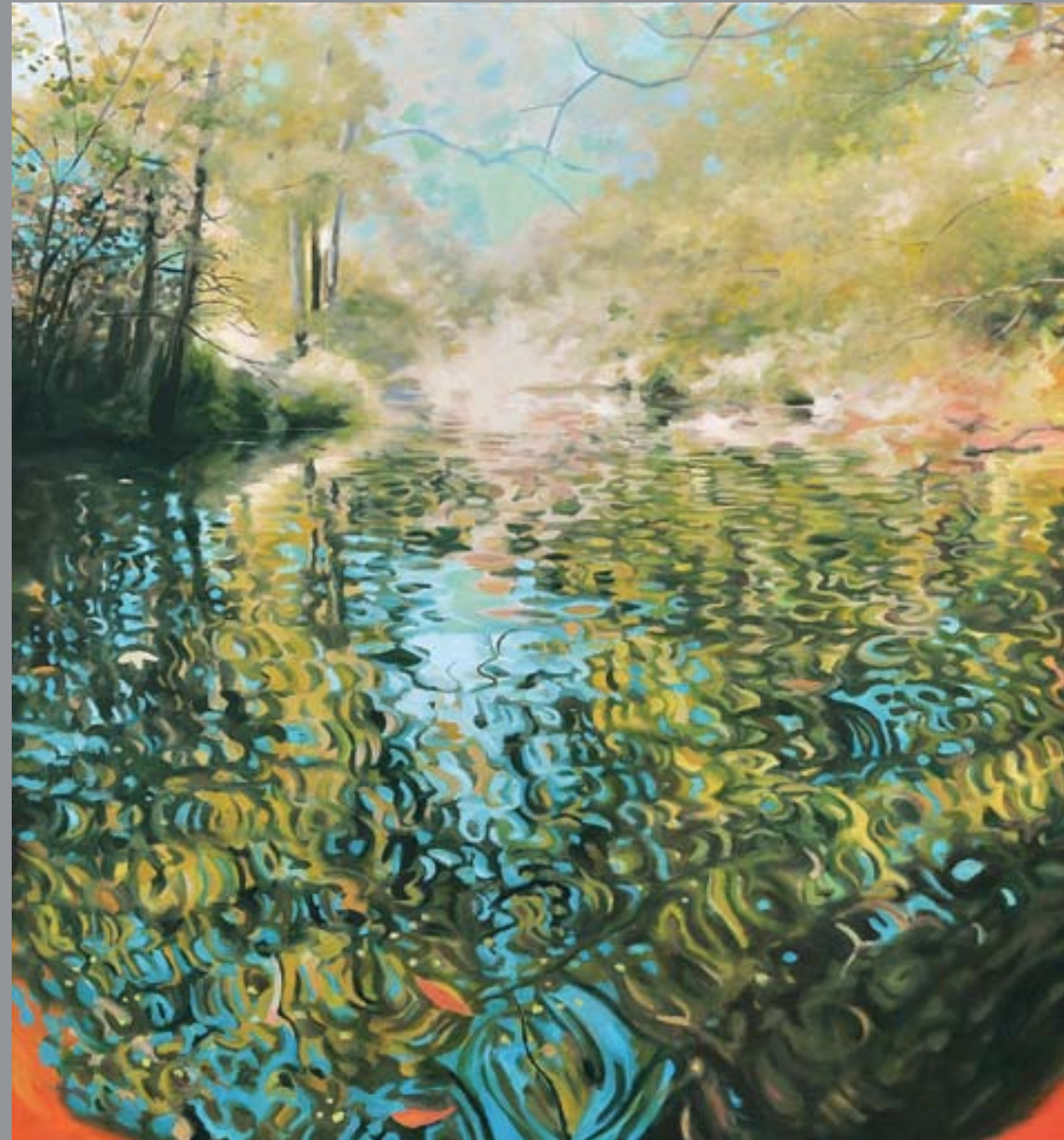


6. The Light Seeps in oil on canvas 80 x 100 cm





7. Birdsong oil on canvas 140 x 120 cm



8. Floating Downstream oil on canvas 140 x 130 cm





9. The First Wild Night oil on canvas 140 x 190 cm



10. The Woods for the Trees oil on canvas 140 x 190 cm





11. Dark Matter oil on canvas 90 x 120 cm



12. Lane End oil on canvas 80 x 120 cm





13. Pallet 50 - Vale oil on canvas 31 x 40 cm



14. Pallet 49 - Cove oil on canvas 25 x 30 cm



15. Secret Path oil on canvas 130 x 170 cm







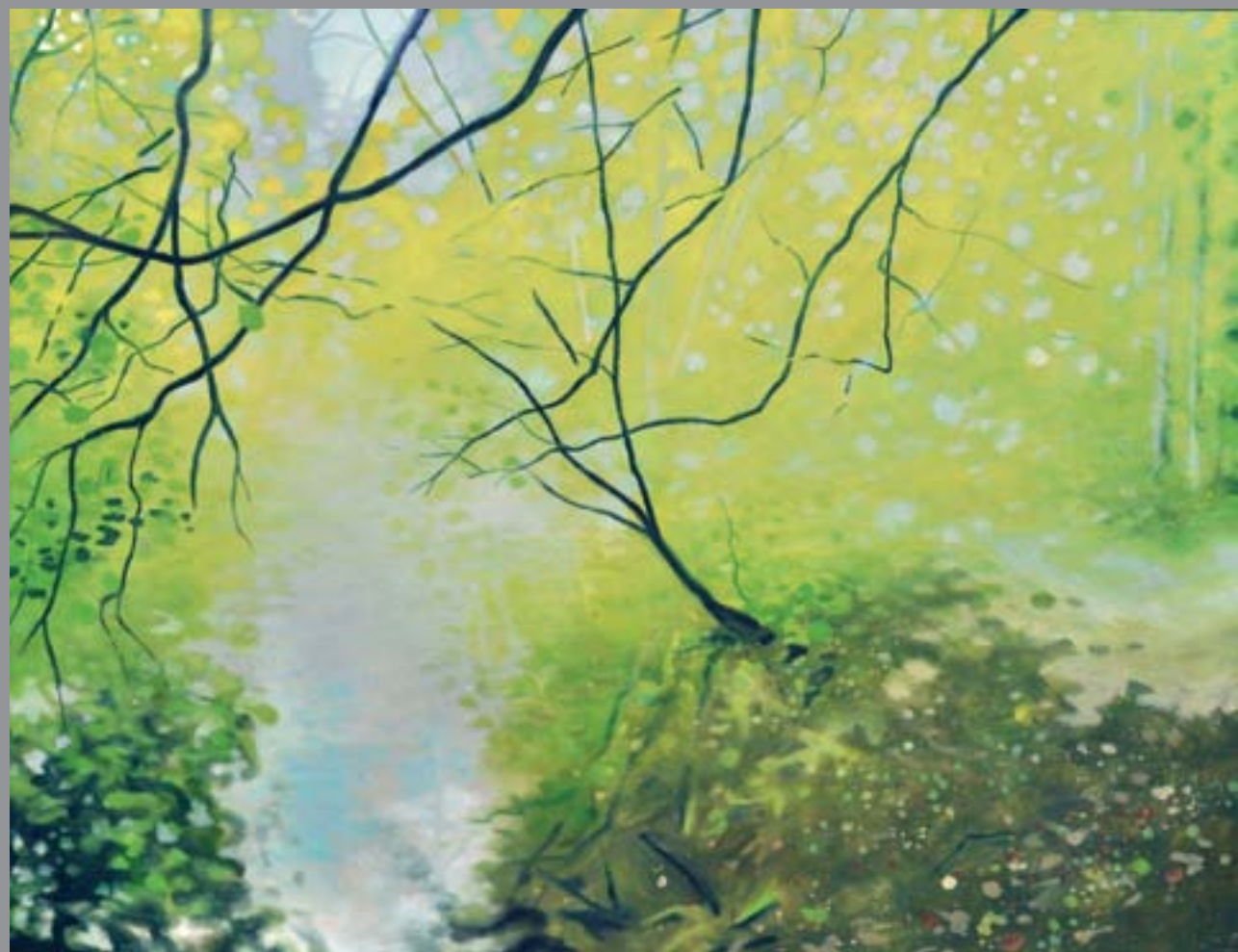


17. Turbid Waters oil on canvas 85 x 110 cm



18. Subterranean Wood oil on canvas 80 x 110 cm





19. Shimmer oil on canvas 85 x 110 cm



20. The Promise of the Day oil on canvas 110 x 190 cm





21. The Bend in the River oil on canvas 140 x 190 140 x 100 cm





22. The Green Man oil on canvas 90 x 45 cm 90 x 90 cm 90 x 45 cm

#### Selected Exhibitions:

Permanent Collection of the Paisley Art Institute 1993  
 Royal Society of Arts Student Show, Edinburgh 1994  
 Animation Festival, Bremen & Hamburg, Germany 1996  
 Video Installation, Costa Caparica, Portugal. 1996  
 Will's Art, Fulham, London. 1997- 03  
 Cadogan Contemporary. Group shows. 1997- 08.  
 Watermans Art Centre 1997  
 106 Gallery, Sclater st. London.E1, 1998  
 The Rack Gallery, Tyers Gate, London.SE1. 1998  
 The Barbican VSO Show London 1998  
 The City Gallery, London. EC2. 1999  
 An Tuireann Arts Centre, Isle of Skye. 1999  
 International Art Consultants, London E1 2000,01,02  
 Mural Commission for HMS President, London 2000  
 Curated & exhibited 'Lambda', Rhythm Factory. E1 2001  
 Cadogan Contemporary. London. 2002, 04, 05, 07, 08  
 Wylve Valley Art Trail 09  
 The Adam Gallery Bath 09  
 Farrington Contemporary Gibraltar solo show 09



The Green Man - (Exterior) 90 x 90 cm



