

adam gallery

JÜRGEN MÖBIUS

a d a m gallery

JÜRGEN MÖBIUS

24 CORK STREET LONDON W1S 3NJ t: 0207 439 6633

13 JOHN STREET BATH BA1 2JL t: 01225 480406

e: info@adamgallery.com www.adamgallery.com

Jürgen Möbius was born in 1939 in Großenhain near Dresden, Germany. He studied Fine Art, Philosophy and Art History at the University of Mainz from 1959–1965.

Möbius' new works repay intense scrutiny as they contain layers of meaning and complexity distilled in to a finished surface. Whilst they are rooted in our world, they also inspire metaphysical explorations of the forms.

Möbius works in series. When he comes to a point in his painting where different perspectives can be followed, he would rather pursue them all. He will often make copies of his initial work, or will photograph it to create additional supports and will go on to explore many of its infinitely variable possibilities. Either through his brushes, a computer screen or his hands full with cutting papers, Möbius needs to experiment. It is his way of exploring the 'accident'. He does not like giving up on ideas even though 'there are too many questions to be responded to'.

In a new series of work, Möbius explores Monet's late paintings of water lilies. It was said at the time that Monet evoked 'not the landscape but the sensation produced by the landscape'. His observations of the water lilies became 'almost abstract' and Möbius' paintings continue this legacy to explore the nature of abstraction further. Möbius felt the need to disturb Monet's apotheosis of colours with the most violent and hardest contrast and chose to paint the water lily shapes in black, a non-colour. He intention is to 'engage' his viewer, to raise their own awareness of the contradictions and conflicts that he himself feels as a contemporary painter.

Möbius uses the surfaces of his works to highlight the materiality of the paintings. The elements of collage and texture, such as 'The Rock' ensure the viewer is aware these are flat, real objects, not illusions. The emphasis on the painting itself as well as playing with opposites, contradictions and ironies, connects Möbius with the ideas of Robert Rauschenberg and Jasper Johns.

In the 'landscape' series Möbius takes a motif such as a mountain range or a horizon, and transports it to another place that is full of mystery and enigmas. The drama evoked by these works reminds us of nineteenth century Romanticism and the awe-inspiring landscapes of the sublime. One of the most enigmatic pieces in this show is called 'Laboratory Room'. Overtly grey and icy, a few black marks puncture the canvas like 'black holes'. A flux of lines attempts to connect somewhere but fails and falls into an abstract evanescent mass. As the artist said 'I hunt myself in the laboratory painting'. In constant circulation of thoughts and ideas, Möbius' work is imbued with secrets, ephemeral possibilities and combinations.

1. Water Lilies I oil, acrylic on canvas 136 x 141 cm





2. Laboratory Rooms oil on canvas 127 x 204 cm



3. Footsteps in the Sand oil on paper 29 x 47 cm



4. Two Red Marks in the Sierra oil on canvas 102 x 52 cm



5. Water Lilies II oil on canvas 143 x 67 cm



6. Water Lilies III oil on canvas 141 x 141 cm



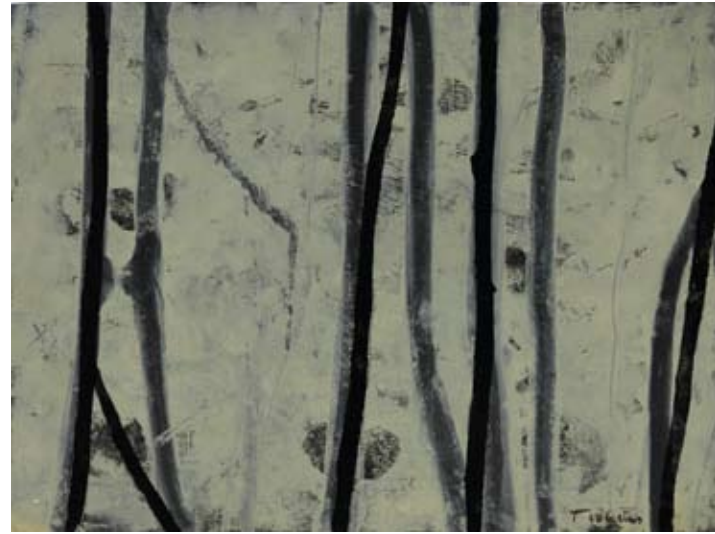
7. Sierra mixed media on paper 50 x 40 cm



8. Chinese Landscape oil on canvas 112 x 74 cm



9. Bewitched Forest I mixed media on paper 29 x 34 cm



10. Bewitched Forest II mixed media on paper 30 x 40 cm



11. Untitled I mixed media on canvas 105 x 80 cm



12. Water Lilies IV mixed media on paper 49 x 64 cm



13. Sun-down Water Lilies oil on canvas 166 x 105 cm



14. Water Lilies V oil on canvas 60 x 132 cm



15. Water Lilies VI oil on canvas 116 x 119 cm



16. The Rock mixed media on paper 23 x 40 cm



17. Palms and Table Mountain oil on canvas 77 x 60 cm



18. Three Striped Objects oil on paper 29 x 34 cm



19. Sierra mixed media on paper 42 x 40 cm



20. Happy Take-off mixed media on paper 29 x 20 cm



21. Black Cluster mixed media on paper 29 x 20 cm



22. Striped Object mixed media on paper 29 x 20 cm



23. Untitled II mixed media on paper 33 x 28 cm



24. Difficult Take-off oil on paper 29 x 20 cm



25. TAG mixed media on paper 29 x 20 cm



26. Bewitched Forest III mixed media on paper 29 x 34 cm



27. Water Lilies VII mixed media on paper 49 x 64 cm

28. Water Lilies VIII mixed media on paper 50 x 70 cm



29. Water Lilies IX mixed media on paper 40 x 30 cm



30. Strange Flowers oil on paper 60 x 24 cm



31. Landscape mixed media on paper 77 x 60 cm



32. Street Girl oil on paper 29 x 20 cm

Selected Solo Exhibitions

- | | |
|------|---|
| 2009 | Adam Gallery London |
| 2008 | Adam Gallery, London |
| | Espace Courant d'Art, Chevenez, Switzerland |
| 2006 | Adam Gallery, London |
| 2005 | Leonhard Rüthmüller Contemporary Art, Basel, Switzerland |
| | Chesa da Cultura St. Moritz, Switzerland |
| 2004 | Märkisches Museum Witten |
| 2002 | MVB Forum für Kultur und Wirtschaft Mainz |
| 1999 | Galerie Leonhard, Basel, Switzerland, |
| | Galerie Ulrike Buschlinger, Wiesbaden |
| 1995 | Broadcast Center of the Second German TV, Mainz |
| | Galerie Kulturlade Zürich, Switzerland |
| 1994 | European Union, Office Rheinland-Pfalz, Brussels/ Belgium |
| 1988 | Kunsthalle Darmstadt, |
| 1986 | Museum Bochum |
| 1984 | Goethe-Institut Boppard, |
| | Landesmuseum Mainz, |
| | Kunstverein Ludwigshafen |
| | Nassauischer Kunstverein Wiesbaden |
| 1980 | Union of the Parliament, Bonn |
| | Mittelrheinmuseum Koblenz |
| 1977 | Märkisches Museum Witten |
| 1974 | Röderhausmuseum Wuppertal |



Selected Publications

P. Büttner, 'Rebus – an unsolvable puzzle?', publication of the Rüthmüller Galerie Basel.
J. Hempel, 'Keep Cover Closed – Approaches to Jürgen Möbius', in "Begegnungen II – Kunst in Rheinland-Pfalz", Pfälzische Verlagsanstalt GmbH Landau/Pfalz, 1981.
W. Kroener, 'Jürgen Möbius – a portrait', Mainzer Rheinzeitung, 5.3.1994.
R. Mieritz, 'Project for a TV.script', in 'Jürgen Möbius', publication of the Rüthmüller Galerie Basel, 1992.
J. Möbius, 'Theme: Landscape', KUNSTMagazin 3.1979
P. Spielmann, 'Peter Spielmann for Jürgen Möbius', catalogue text for exhibition, Darmstadt 1988.
D. Stolte, 'Jürgen Möbius – How to keep one's own personality in the modern mass and medium society by art', ZDF-Press-Special, catalogue text for exhibition, 1995.
W. Venzmer, 'Remarks to Jürgen Möbius', catalogue text for exhibitions in Mainz (1985), Ludwigshafen (1985) and Bochum (1986).
W. Venzmer, 'About the endangering of man – Remarks to new works of the painter Jürgen Möbius', MAINZ-Magazin for culture-politics-economy-history, 1986.
W. Venzmer, 'Jürgen Möbius', Dokumentation of the Central Bank of Rheinland-Pfalz, 1991.
W. Zemter, 'Jürgen Möbius – Supranatural Landscapes', catalogue text for exhibition, Märkisches Museum Witten, 1977.
W. Zemter, H-J. Buderer and H.J. Imiela1999 'Jürgen Möbius', editor W. Zemter. Publisher Kettler, Bönen. 1999.
W. Zemter, P. Büttner 'Planes in my Room', 'Quiet Zone', editor W. Zemter for the exhibition in Märkisches Museum Witten, Germany
and also Chesa da Cultura in St. Moritz, Switzerland 2004 double edition.

Public and Corporate Collections

Landesmueum Mainz	Landeszentralbank für Rheinland-Pfalz und das Saarland, Mainz
Städtisches Museum Wiesbaden	Landesbank in Rheinland-Pfalz, Mainz
Mittelrheinmuseum Koblenz	Deutsche Bank AG
Märkisches Museum Witten	Kreditanstalt für Wiederaufbau KfW, Frankfurt on Main
Museum Bochum	Bayerische Hypotheken- und Wechselbank, München
Museum des 20.Jh. Pachen, Rockenhausen	Broadcast Center of the Second German TV, Mainz
Röderhausmuseum, Wuppertal	Novartis AG Basel, Switzerland
Museo di Olevano Romano, Italy	CSC Ploenzke AG, Kiedrich
Museu de Arte Moderna do Rio de Janeiro	Railion Deutschland AG
Museum Albstadt	Chesa da Cultura St.Moritz, Switzerland
Ostdeutsche Galerie Regensburg	
Land Rheinland-Pfalz	

