An abstract painting by Fred Cuming RA, featuring a complex composition of layered brushstrokes. The palette is dominated by cool tones of blue, teal, and grey, with occasional warm accents of yellow and orange. The texture is highly visible, with thick applications of paint and fine, gestural marks. The overall effect is one of atmospheric depth and dynamic movement.

adam gallery

FRED CUMING RA

a d a m gallery

FRED CUMING RA

3 Northumberland Buildings Bath BA1 2JB t: 01225 480406

e: info@adamgallery.com www.adamgallery.com

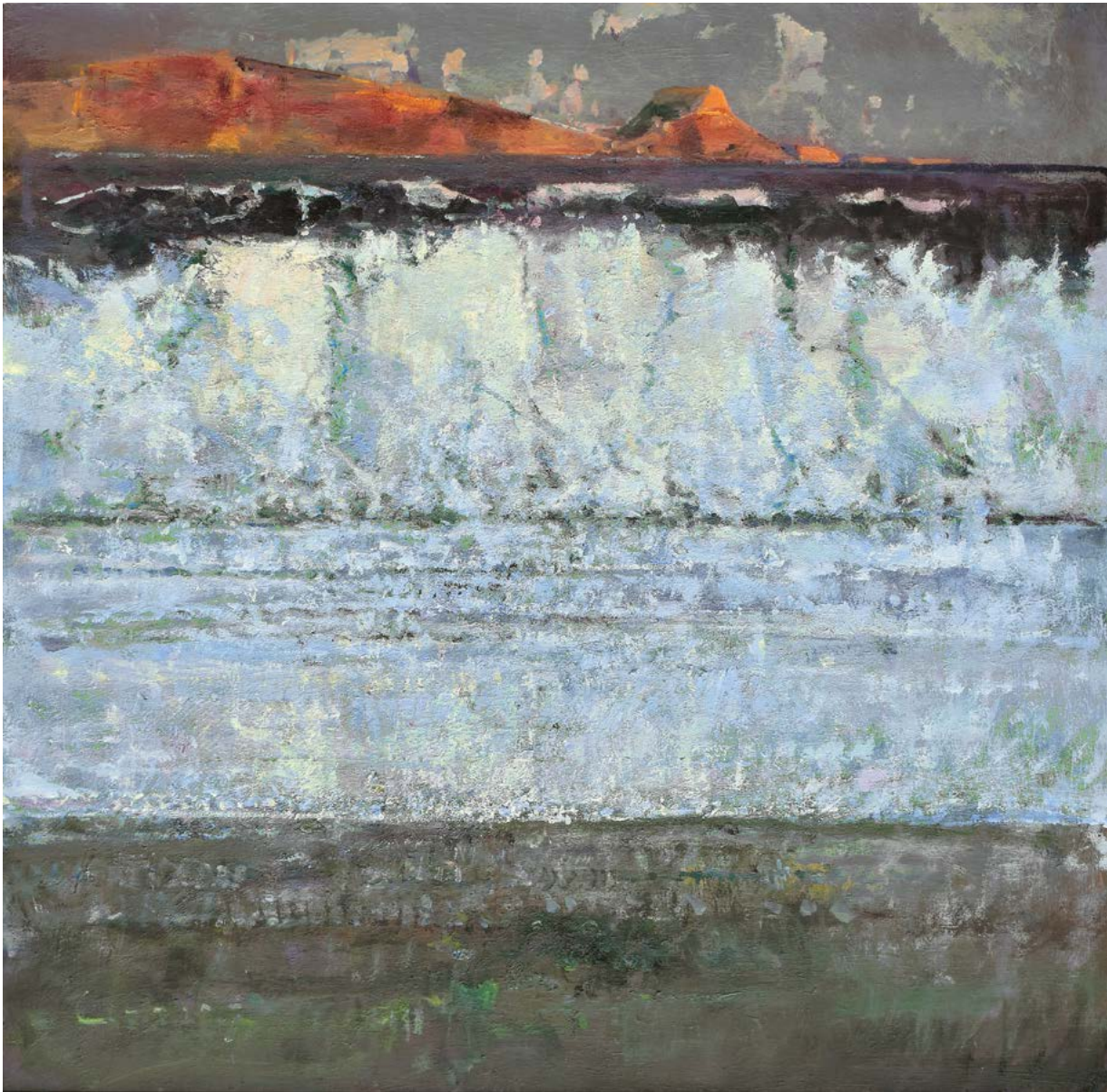
Fred Cuming RA

We are delighted to be presenting a show of recent works by Fred Cuming RA.

Fred has exhibited widely in the UK and abroad throughout his long career and has won many awards. His work is featured in many public and private collections including National Museum of Wales, Canterbury Museum, National Portrait Gallery, National Trust, Monte Carlo Museum, Royal Academy of Arts, Department of the Environment, Guinness Collection, Lloyds of London, W.H. Smith, the London Tourist Board and the RAC.

He was elected an Associate Member of the Royal Academy as long ago as 1969, becoming a full member six years later in 1974. He is one of the most established British painters working today.

1. Breaking Wave, Jurassic Coast | oil on panel | 30 x 30 ins





2. Evening Sky Camber | oil on panel | 12 x 16 ins



3. Blossom Moonrise | oil on panel | 20 x 24 ins



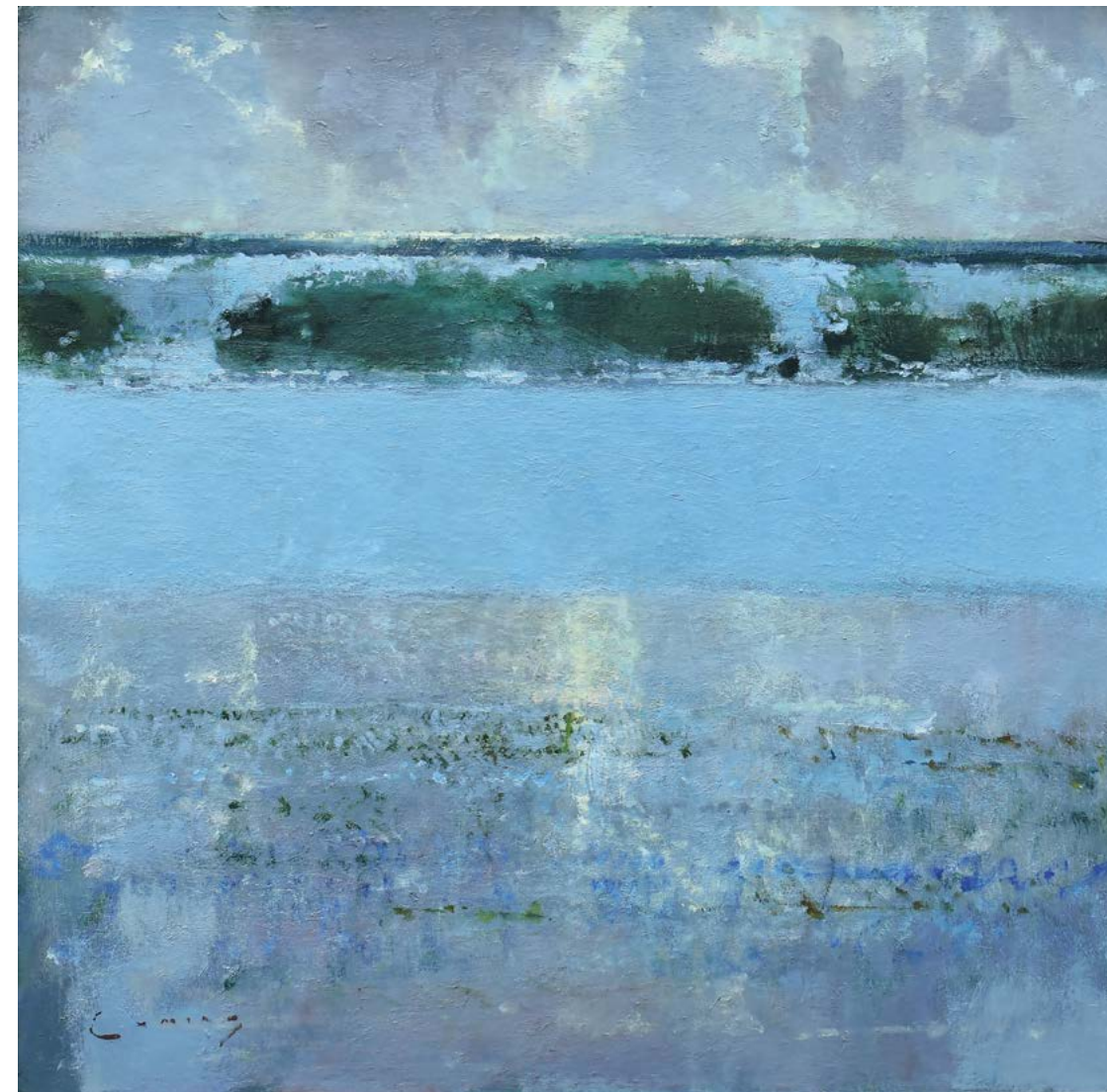
4. Camber Sunset | oil on panel | 8 x 8 ins



5. Full Moon, Camber | oil on panel | 30 x 30 ins

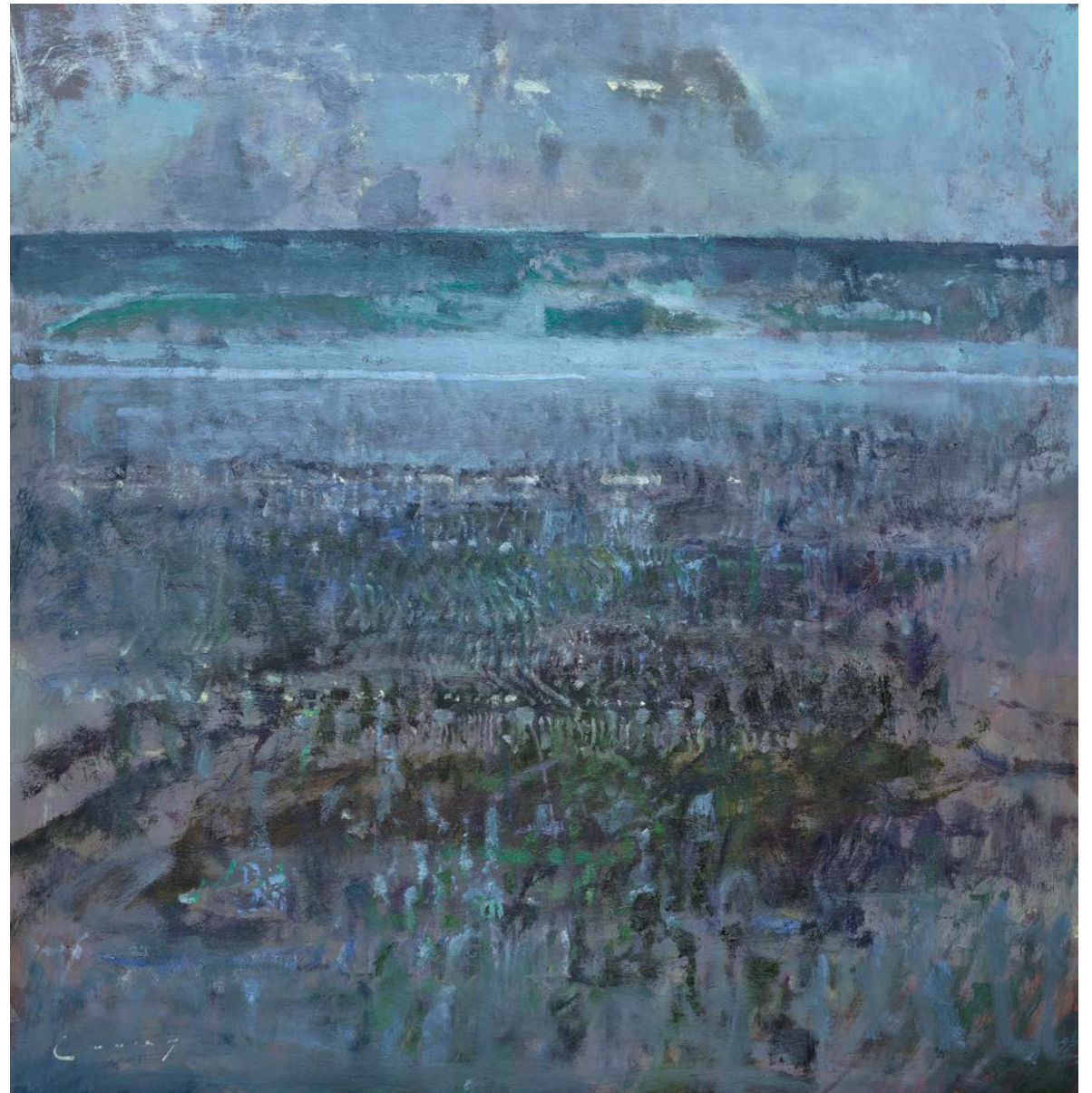


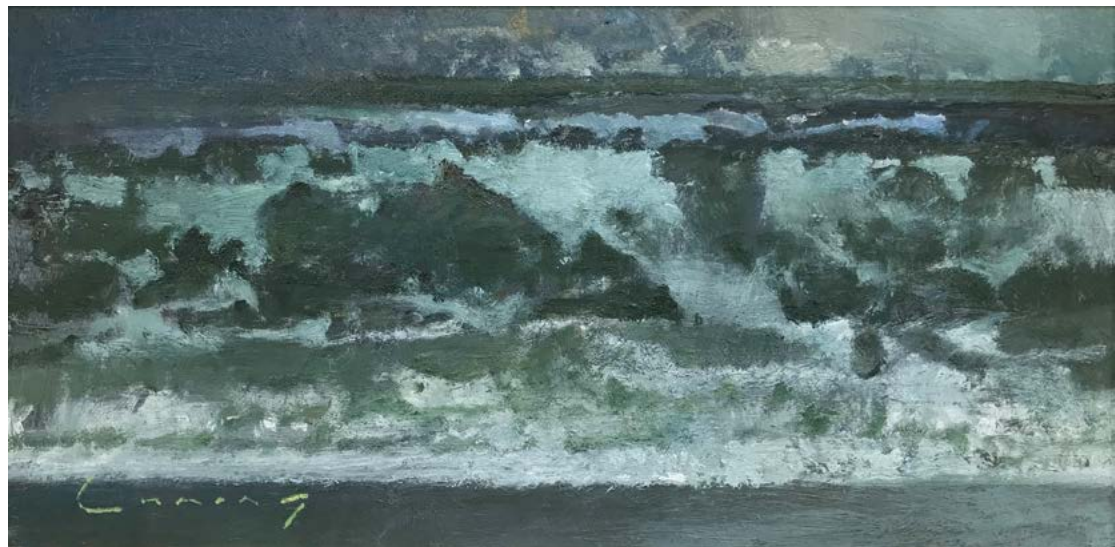
6. Hythe Canal | oil on panel | 10 x 12 ins



7. Camber Surf | oil on panel | 24 x 24 ins

8. Winter Sea | oil on panel | 36 x 36 ins





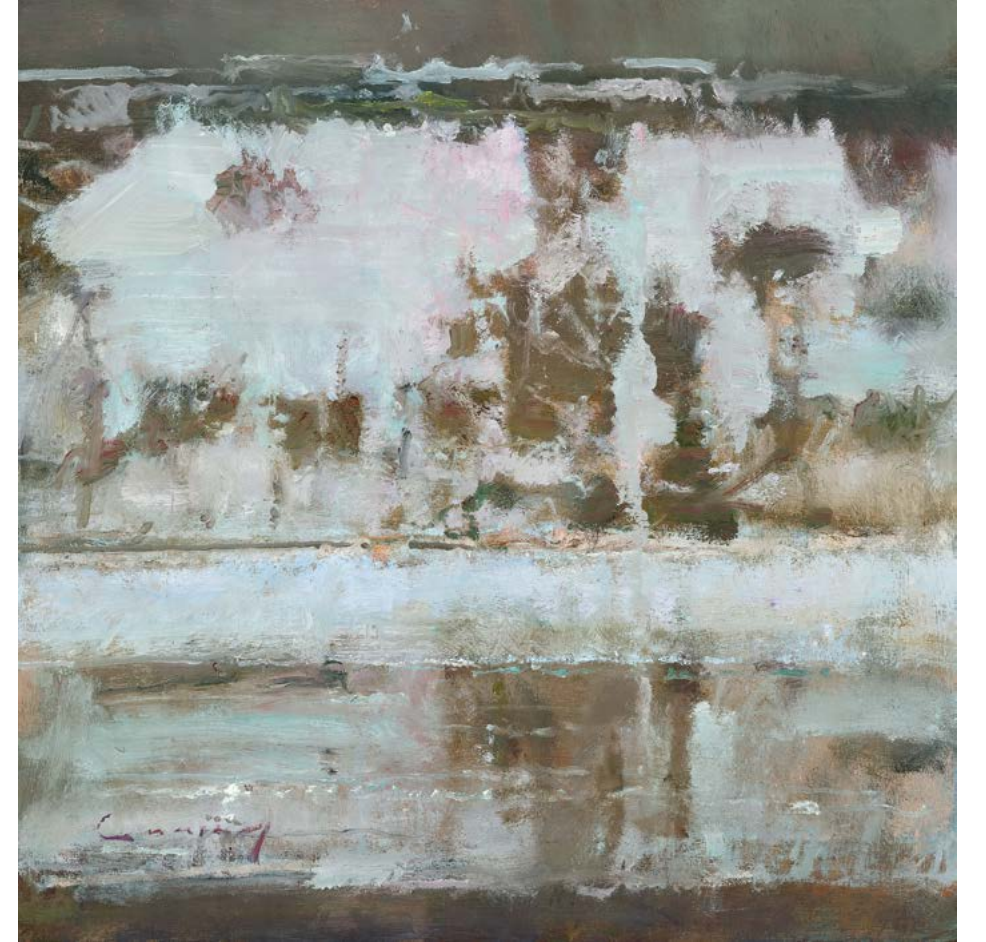
9. Dark Sea Study II | oil on panel | 8 x 16 ins



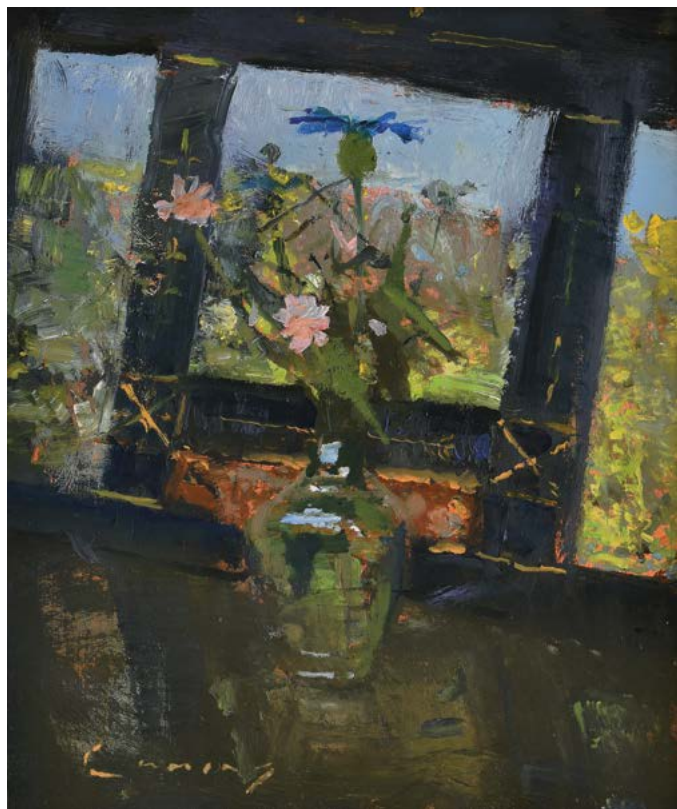
10. Moonrise Camber | oil on canvas | 20 x 24 ins



11. Rye Harbour Sunset | oil on panel | 10 x 10 ins



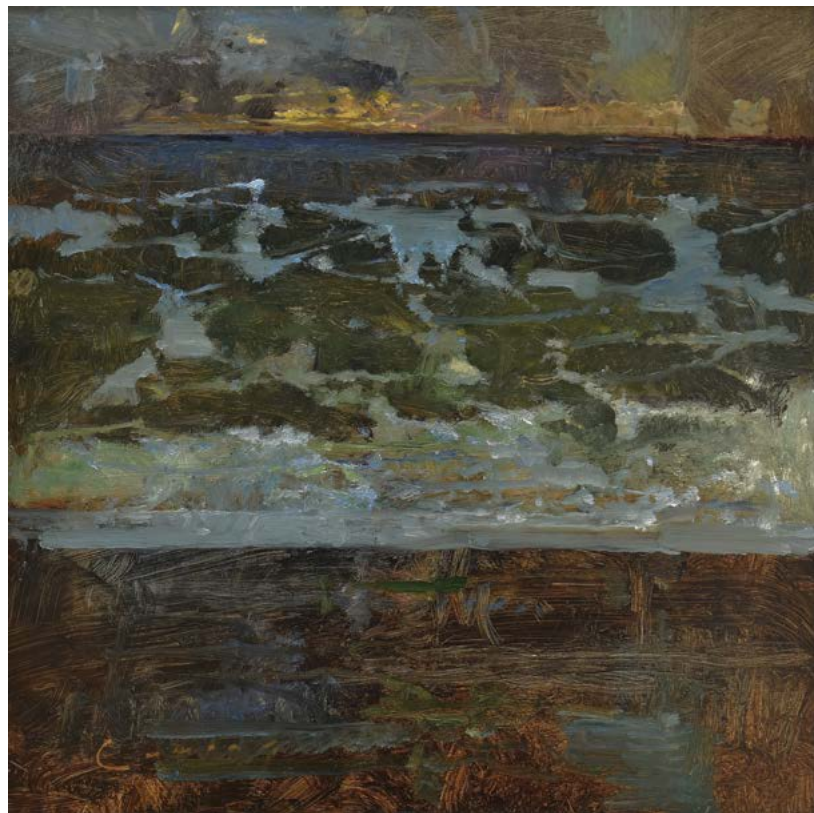
12. Breaking Wave | oil on panel | 20 x 20 ins



13. Mirror and Spring Flower Study | oil on panel | 12 x 10 ins



14. Dawn Harbour | oil on panel | 20 x 24 ins



15. Dawn Seascape, Camber | oil on panel | 16 x 16 ins



16. Late Evening, St Michael's Mount | oil on panel | 20 x 24 ins



17. Evening, Camber | oil on panel | 12 x 20 ins



18. View West towards Dungeness | oil on panel | 20 x 24 ins



19. Cloud Study, Camber | oil on panel | 12 x 12 ins



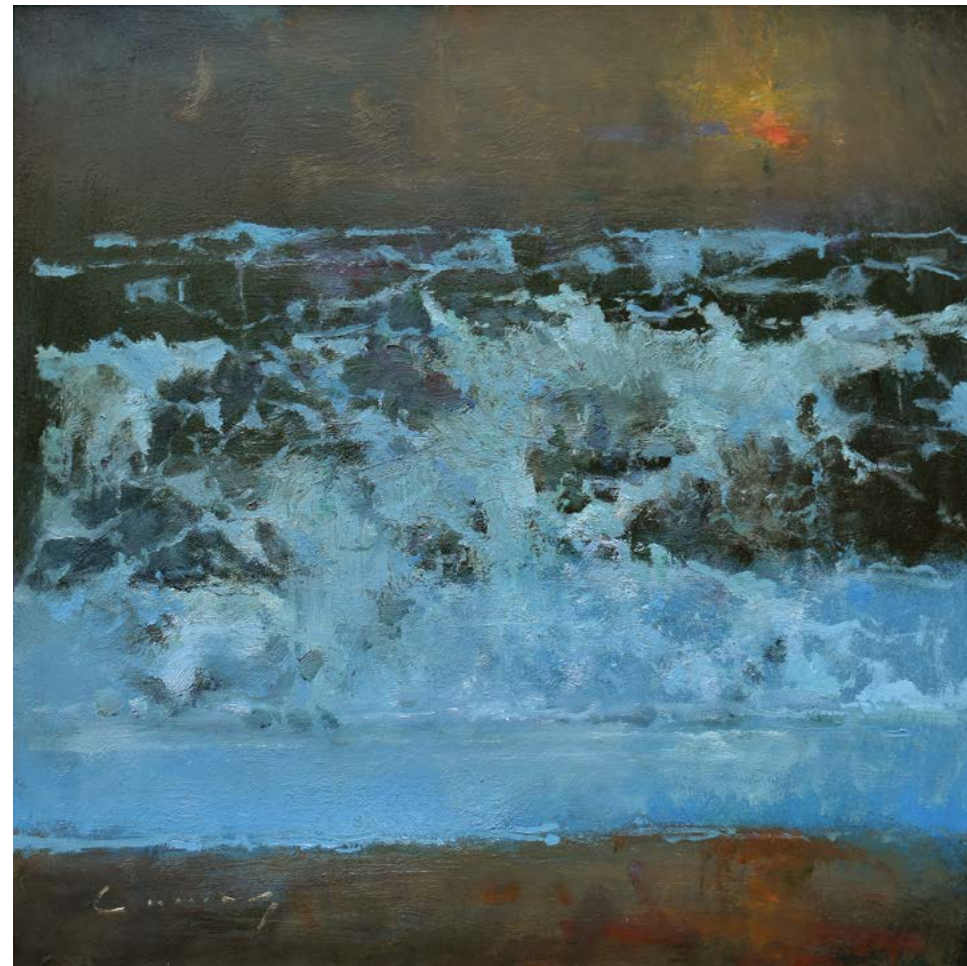
20. View from Balcony, Fowey Study | oil on panel | 20 x 20 ins



21. Spring Flower Study | oil on panel | 12 x 10 ins



22. Vase of Flowers | oil on panel | 8 x 8 ins



23. Breaking Wave, Evening Sky | oil on panel | 20 x 20 ins



24. Midday, Camber | oil on panel | 12 x 12 ins



25. Dawn from the Guidecca | oil on panel | 12 x 12 ins



26. Dungeness under Snow | oil on panel | 10 x 20 ins



27. Camber Sunrise | oil on panel | 8 x 8 ins

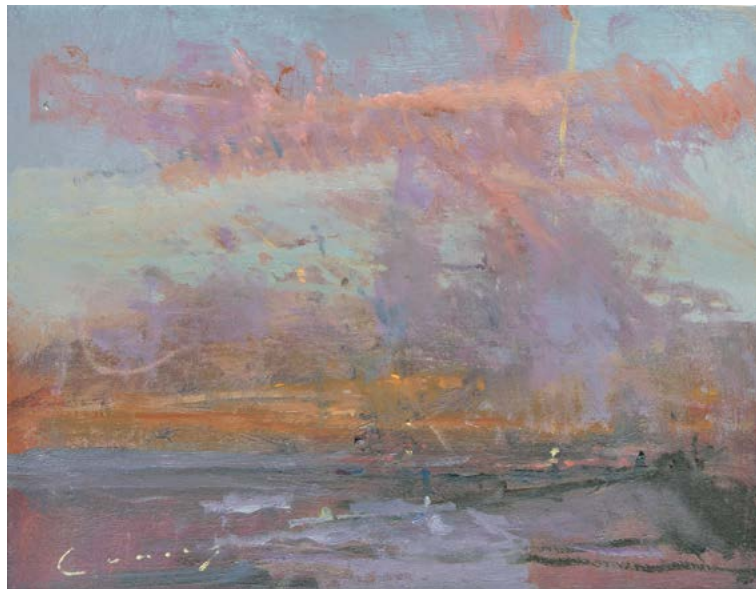


29. Bathers, Camber | oil on panel | 12 x 20 ins



28. Dusk, Camber | oil on panel | 8 x 16 ins

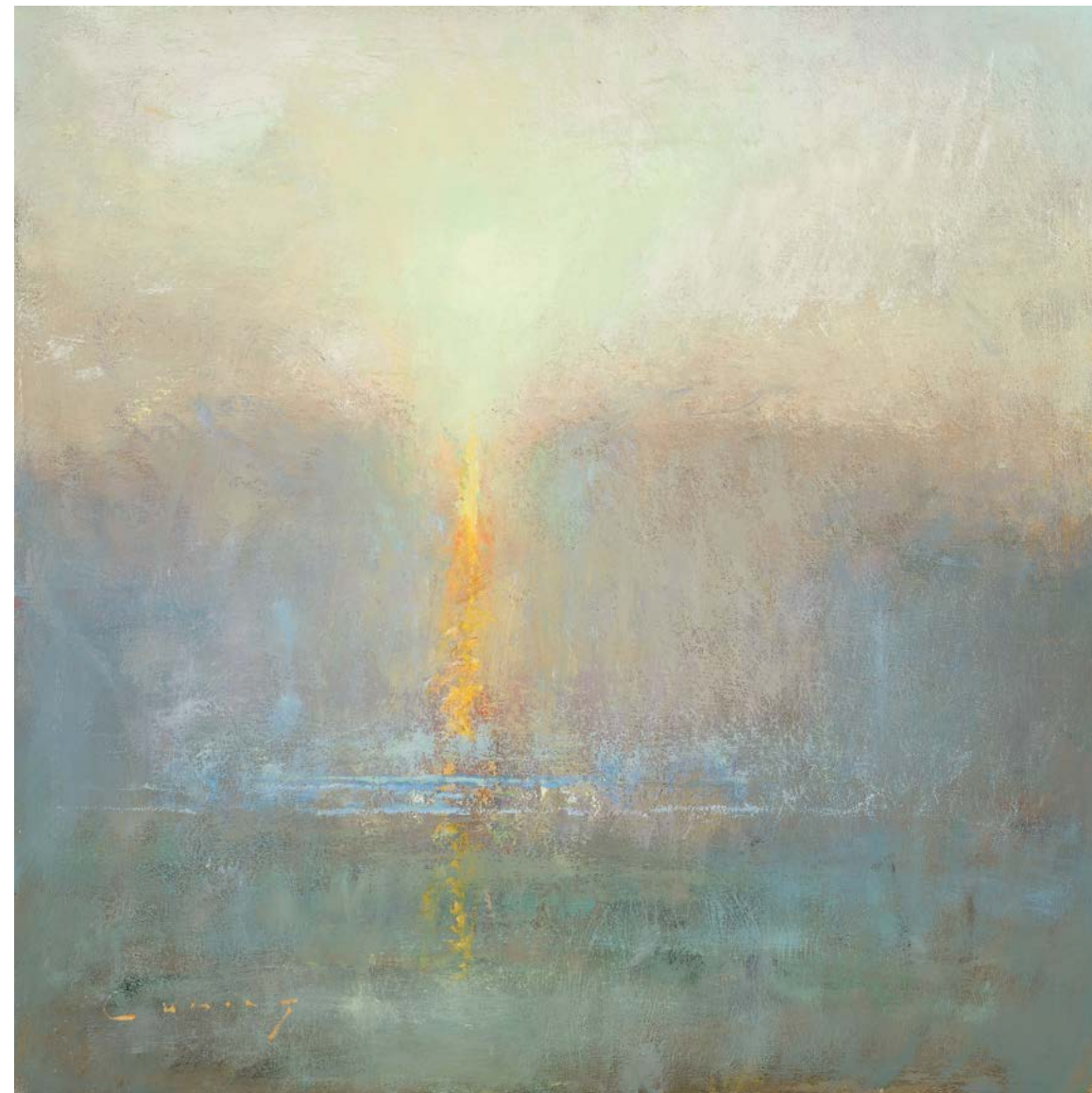
30. Sunset, Camber | oil on panel | 8 x 10 ins



31. Cloud Study, Camber | oil on panel | 6 x 9 ins



32. Camber, Late Evening | oil on panel | 24 x 24 ins





33. Camber Moonrise | oil on panel | 12 x 14 ins

34 Evening Walker | oil on panel | 12 x 12 ins *Back cover*



a d a m gallery

www.adamgallery.com

3 Northumberland Buildings Bath BA1 2JL t: 01225 480406