An impressionistic painting of a winter scene. A large, dark, leafless tree stands in the center, its branches reaching out. The background is a soft, hazy landscape with a small, brightly lit boat or structure in the distance. The overall color palette is muted, with blues, greys, and soft pinks, creating a melancholic and atmospheric mood. The brushwork is visible and expressive, typical of Impressionism.

adam gallery

FRED CUMING RA



a d a m gallery

# FRED CUMING RA

3 Northumberland Buildings Bath BA1 2JB t: 01225 480406

e: [info@adamgallery.com](mailto:info@adamgallery.com) [www.adamgallery.com](http://www.adamgallery.com)

1. Audrey's Tree, Late Evening | oil on panel | 24 x 24 ins *Frontispiece detail*



## Fred Cuming RA

We are delighted to be presenting a show of recent works by Fred Cuming RA.

We have been working with Fred for more than twenty years and visiting him in his studio is always an exiting and intriguing pleasure

- what new works will he have on the easel?

On most visits Fred will be working on a painting while we sit and chat, over a cup of tea and biscuits.

He will casually mix some paint on the palette and gently 'stab' his paint brush onto the board where 'one mark' will subtly but dramatically change the painting. It truly feels like a privilege to witness this master at work with total confidence and consummate skill,

Fred has exhibited widely in the UK and abroad throughout his long career and has won many awards. His work is featured in many public and private collections including Monte Carlo Museum, Royal Academy of Arts, Department of the Environment, Guinness Collection, Lloyds of London, W.H. Smith, the London Tourist Board and the RAC.

He was elected an Associate Member of the Royal Academy as long ago as 1969, becoming a full member six years later in 1974.

This makes him one of the most established British painters working today.





3. Heatwave, Camber | oil on panel | 12 x 12 ins

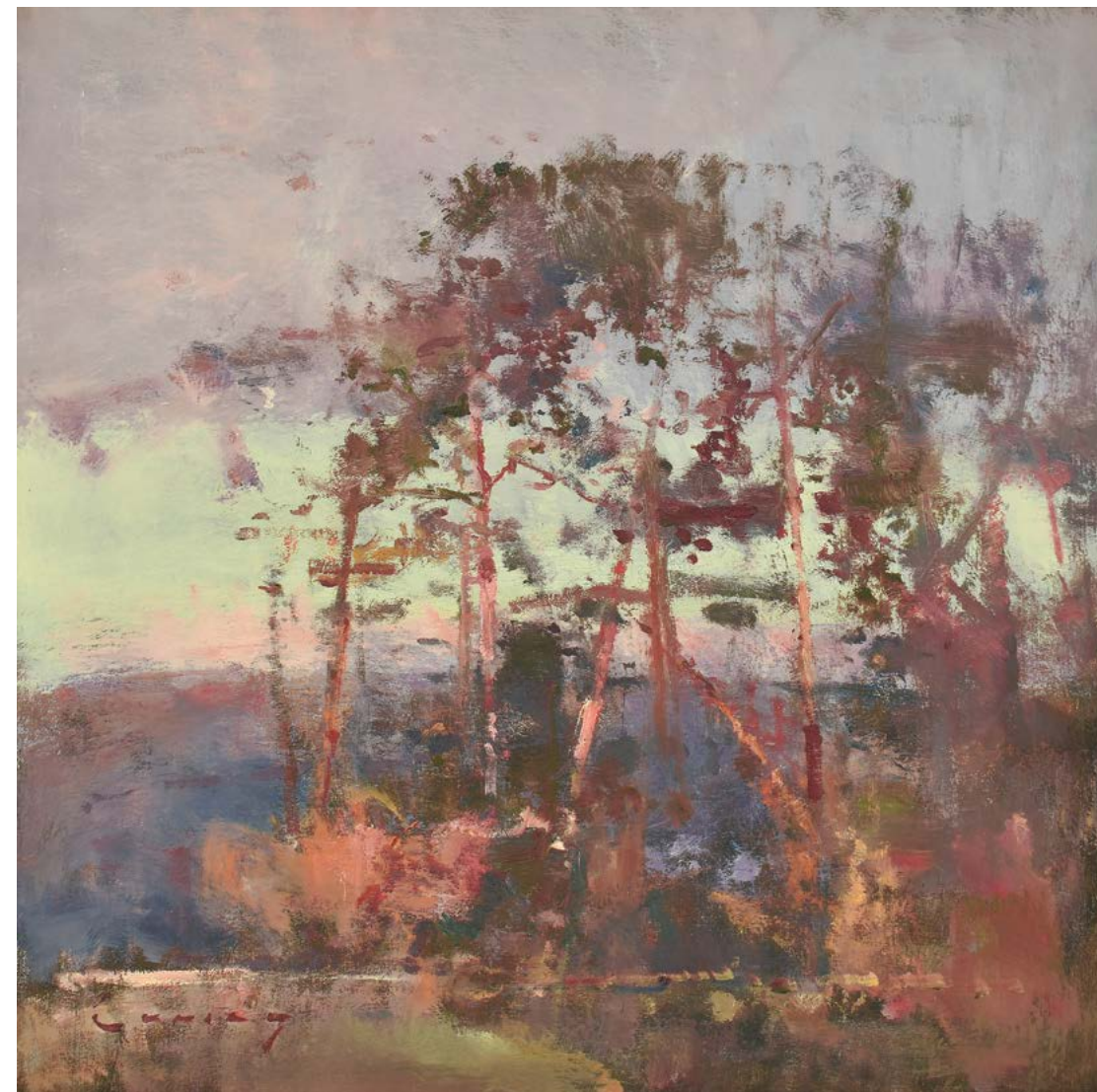


4. October Sky, Camber | oil on panel | 12 x 12 ins



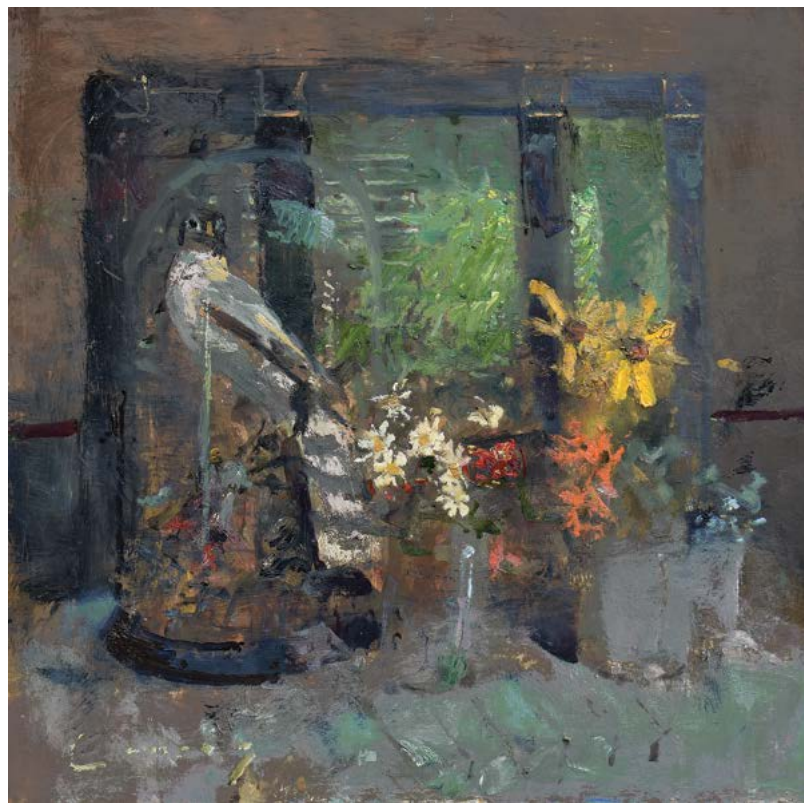


5. Bathers, Arcachon | oil on panel | 10 x 20 ins



6. Colour Study II, Evening Garden | oil on canvas | 24 x 24 ins



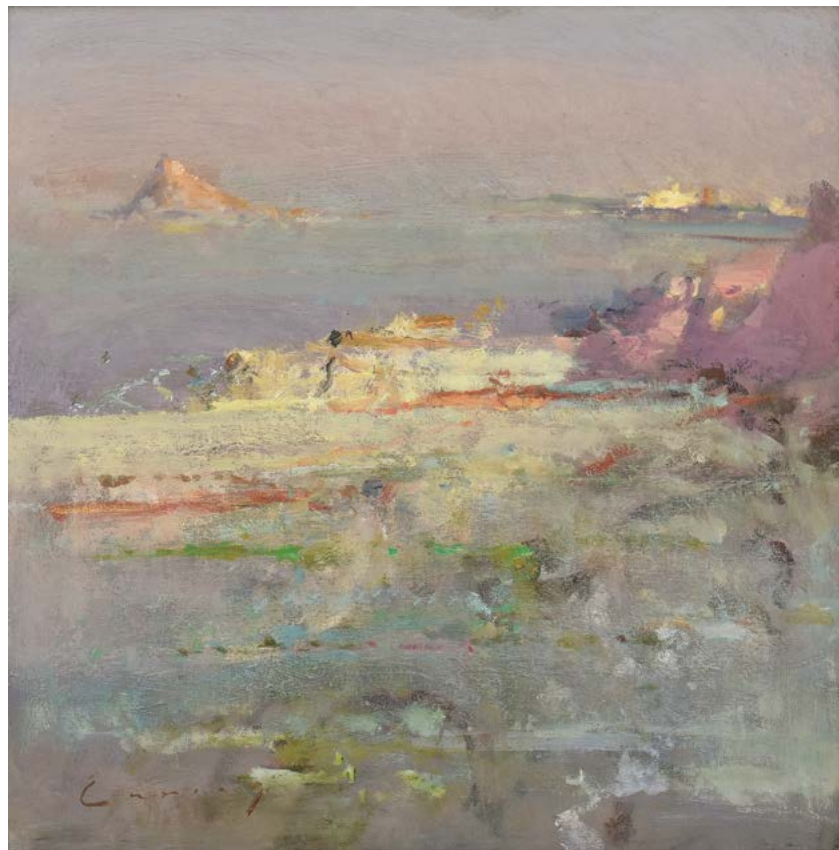


7. Mirror Still Life | oil on panel | 16 x 16 ins



8. Coastline from Camber | oil on panel | 20 x 24 ins





9. St. Michael's Mount | oil on panel | 16 x 16 ins



10. Tall Ships, Falmouth | oil on panel | 20 x 24 ins





11. Petunia Study II | oil on panel | 8 x 8 ins

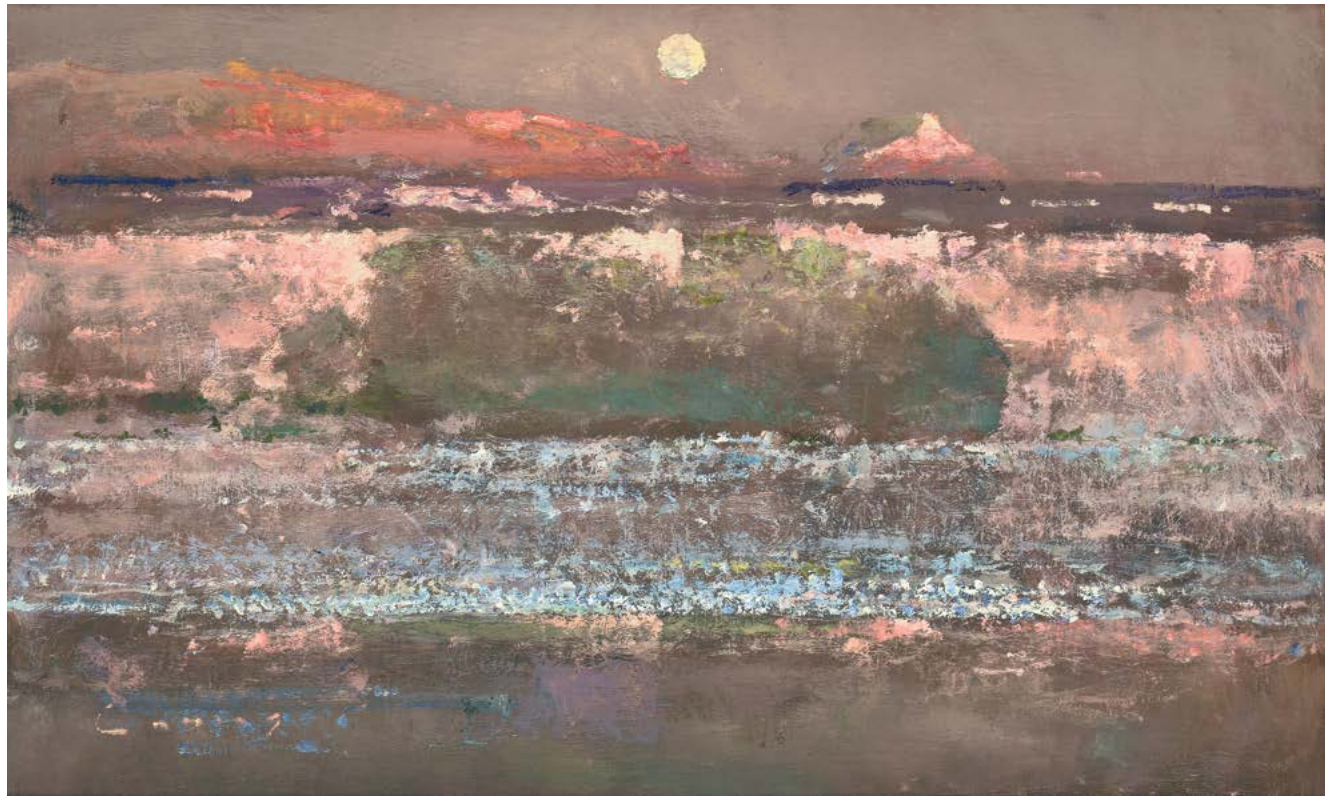


12. Barn Owl | oil on panel | 10 x 12 ins

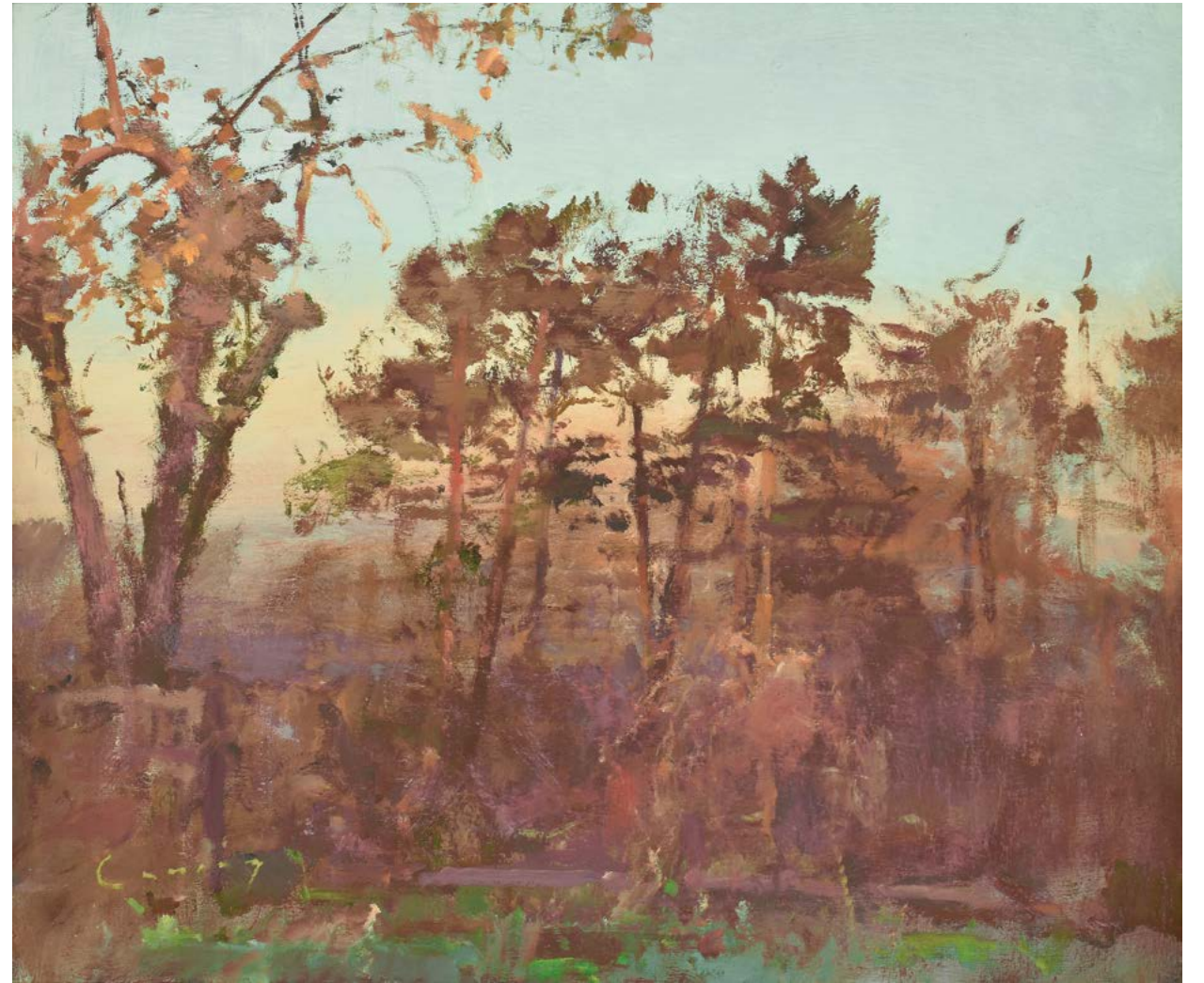


13. Camber, Squall | oil on canvas | 20 x 24 ins



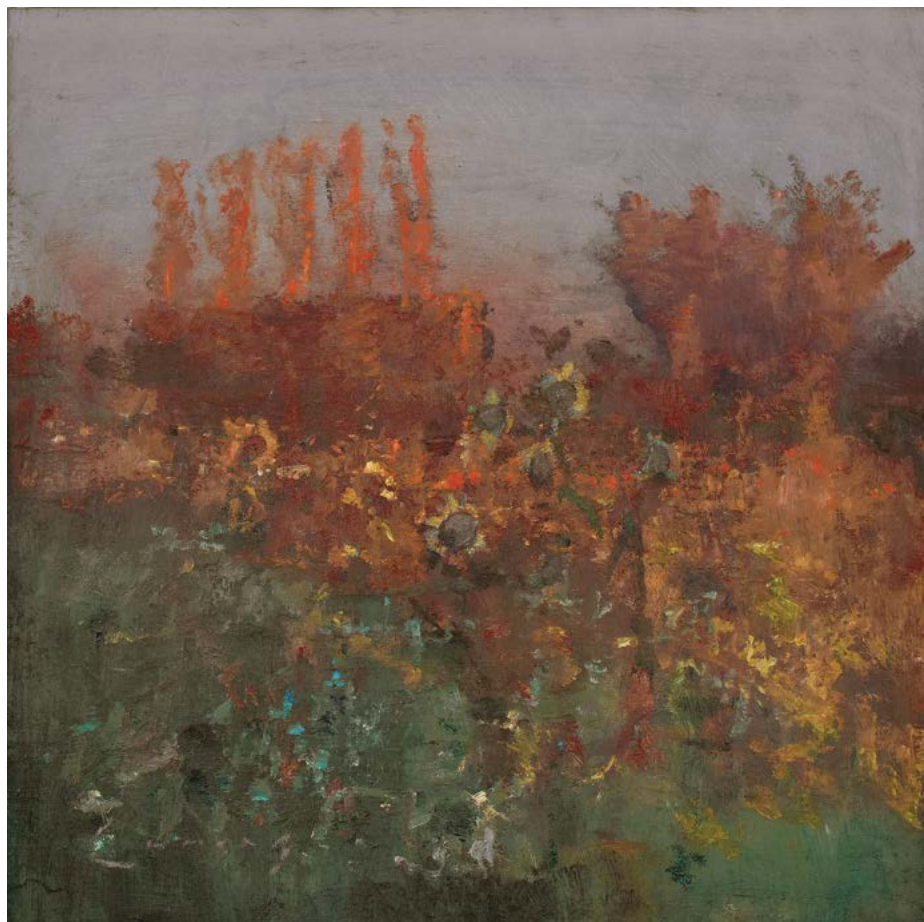


14. Golden Cap, Study I | oil on panel | 12 x 20 ins



15. Colour Study I, Evening Garden | oil on panel | 20 x 24 ins





16. Autumn Garden | oil on panel | 20 x 20 ins



17. Study of Light, Teignmouth | oil on panel | 12 x 24 ins





18. Garden, Moonrise | oil on panel | 12 x 10 ins



19. Winter Garden | oil on panel | 16 x 16 ins



20. Golden Cap, Study II | oil on canvas | 12 x 20 ins





21. Low Tide, Camber Sands | oil on panel | 8 x 16 ins



22. Blue Boar Wharf, Rochester | oil on canvas | 8 x 16 ins





23. Camber Cloud Study, Dawn | oil on panel | 8 x 16 ins



24. Rye Harbour, Evening | oil on panel | 12 x 20 ins





25. Bonfire and Eclipse, Camber | oil on panel | 8 x 16 ins



26. St. Michael's Mount | oil on panel | 12 x 20 ins





27. Tall Ships and Moon | oil on panel | 8 x 10 ins



28. June Garden | oil on panel | 12 x 10 ins

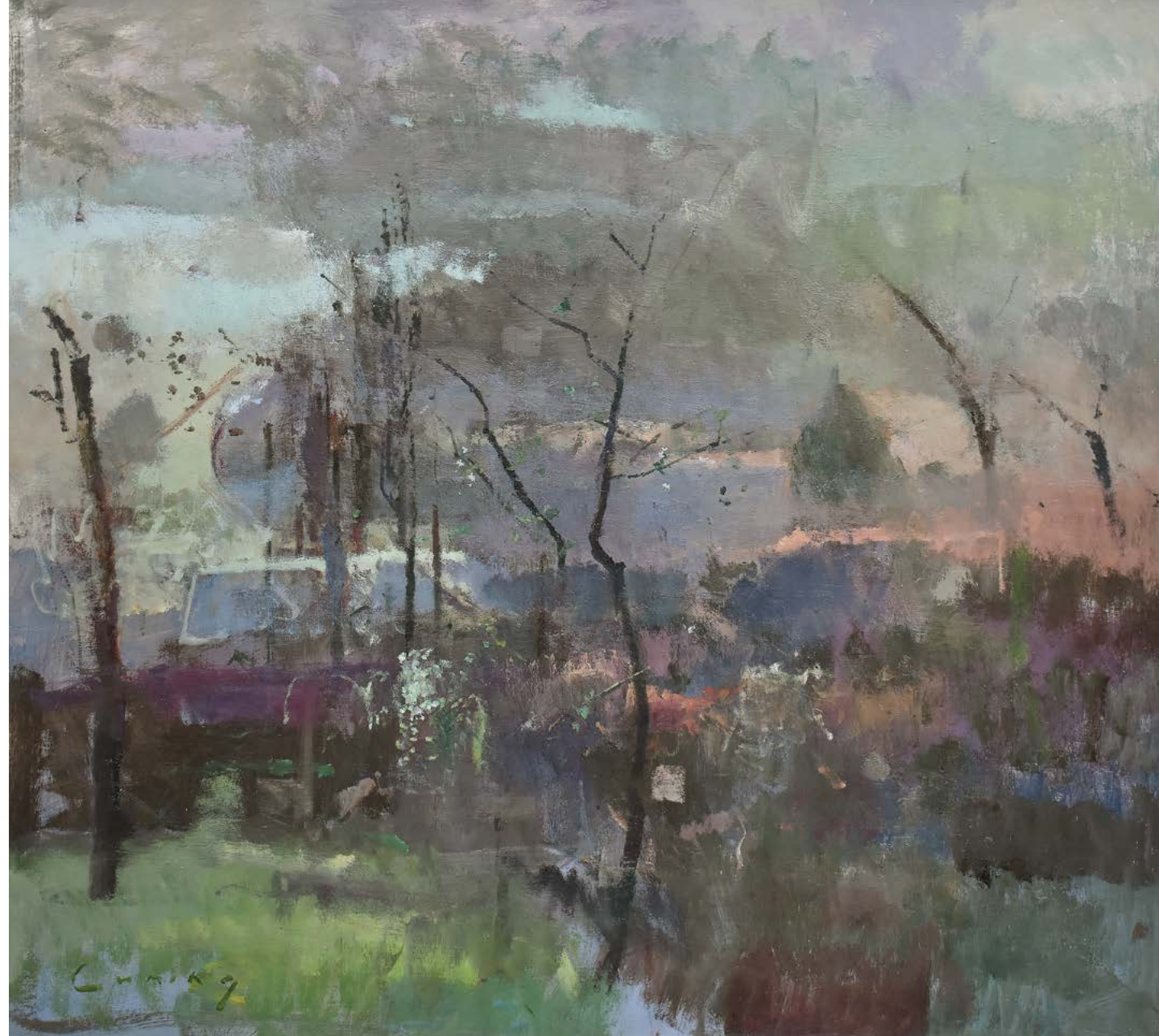


29. Morning, Breaking Wave | oil on panel | 20 x 24 ins





30. Camber Sands, Late Evening | oil on panel | 8 x 16 ins



31. First Blossom | oil on panel | 44 x 48 ins

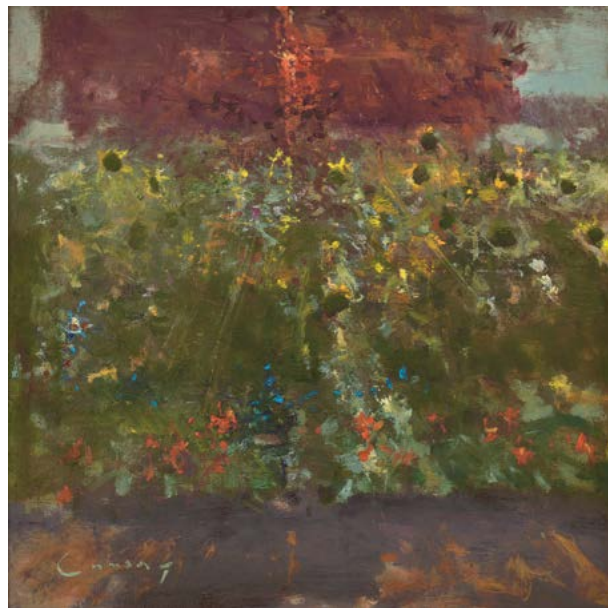




32. Spring Flower Study | oil on canvas | 8 x 8 ins



33. Petunia Study I | oil on panel | 8 x 8 ins



34. August Garden | oil on panel | 16 x 16 ins



35. Audrey's Tree | oil on panel | 24 x 24 ins





36. Bonfire, Hastings Beach | oil on panel | 20 x 24 ins



**a d a m** gallery

[www.adamgallery.com](http://www.adamgallery.com)

3 Northumberland Buildings Bath BA1 2JL t: 01225 480406