

An impressionistic painting of a winter landscape. A large, bare tree with greenish-brown branches stands on the right side. The ground is covered in snow, with patches of brown and red, possibly representing fallen leaves or snow-dusted ground. The sky is a pale, hazy blue. The overall style is soft and painterly, with visible brushstrokes and a muted color palette.

adam gallery

FRED CUMING RA



a d a m gallery

# FRED CUMING RA

13 JOHN STREET Bath BA1 2JL t: 01225 480406

e: [info@adamgallery.com](mailto:info@adamgallery.com) [www.adamgallery.com](http://www.adamgallery.com)



## Fred Cuming RA

Fred Cuming trained at Sidcup School of Art and then at the Royal College of Art, before being awarded a travel scholarship to visit Italy. He was elected an Associate Member of the Royal Academy as long ago as 1964, becoming a full member some ten years later. This makes him one of the most established British painters working today.

He has exhibited widely in the UK and abroad throughout his long career and has won many awards. His work is featured in many public and private collections including Monte Carlo Museum, Royal Academy of Arts, Department of the Environment, Guinness Collection, Lloyds of London, W H Smith and the London Tourist Board.

Fred continues to express the fleeting impressions of his surroundings on the south coast of England around Hastings and Rye where he lives. He attributes his love of landscape to his first experiences of it, when an evacuee in the Blitz: *‘its beauty and drama was such a stark contrast to urban London’*.

*“The love of nature and the lyrical response it inspires, whether in painting or poetry, is inextinguishable in English art. Fred Cuming’s thoughtful and tender depictions of cloud, land and sea, recall times of day where our awareness of transience, or the fragility of appearance is most acute, such as dawn or twilight...”*

Christopher Le Brun (President of The Royal Academy of Arts)



2. Moonrise Garden | oil on panel | 30 x 30 ins



3. Quiet Sea and Clouds, Camber | oil on panel | 16 x 16 ins



4. The Ridge, Military Road | oil on panel | 20 x 24 ins



5. Dawn, the Ridge | oil on panel | 16 x 16 ins



6. Tall Ships, Falmouth | oil on canvas | 20 x 24 ins





7. Camber, October Sky | oil on panel | 8 x 16 ins



8. Kent Downs, Winter | oil on panel | 36 x 36 ins



9. Dymchurch Sands, Sunset | oil on panel | 8 x 16 ins



10. Autumn Trees | oil on panel | 16 x 16 ins



11. Evening Clouds, Camber Sands | oil on panel | 24 x 24 ins





12. Moonrise, Camber Sands | oil on canvas | 20 x 24 ins



13. Gleaners | oil on panel | 10 x 20 ins





14. Thaw | oil on panel | 8 x 16 ins



16. Cornish Beach | oil on panel | 12 x 24 ins



15. Fairground | oil on panel | 8 x 8 ins



17. Spring Garden, Moonrise | oil on panel | 12 x 12 ins



18. Winter Garden | oil on panel | 16 x 16 ins



19. Clouds and Breaking Waves, Camber | oil on panel | 24 x 24 ins





20. Teignmouth - Snow | oil on panel | 10 x 10 ins



21. Rainbow near Camber | oil on panel | 8 x 8 ins



22. Will O' the Wisp | oil on canvas | 20 x 24 ins



23. Poppies, Kent Downs | oil on panel | 8 x 8 ins



24. Morning Glory and Nasturtium | oil on panel | 10 x 10 ins



25. Winter Sunshine | oil on canvas | 20 x 20 ins





26. Prelude to a Storm, Romney Marsh | oil on canvas | 12 x 24 ins



27. Moonrise, Dungeness | oil on panel | 8 x 16 ins



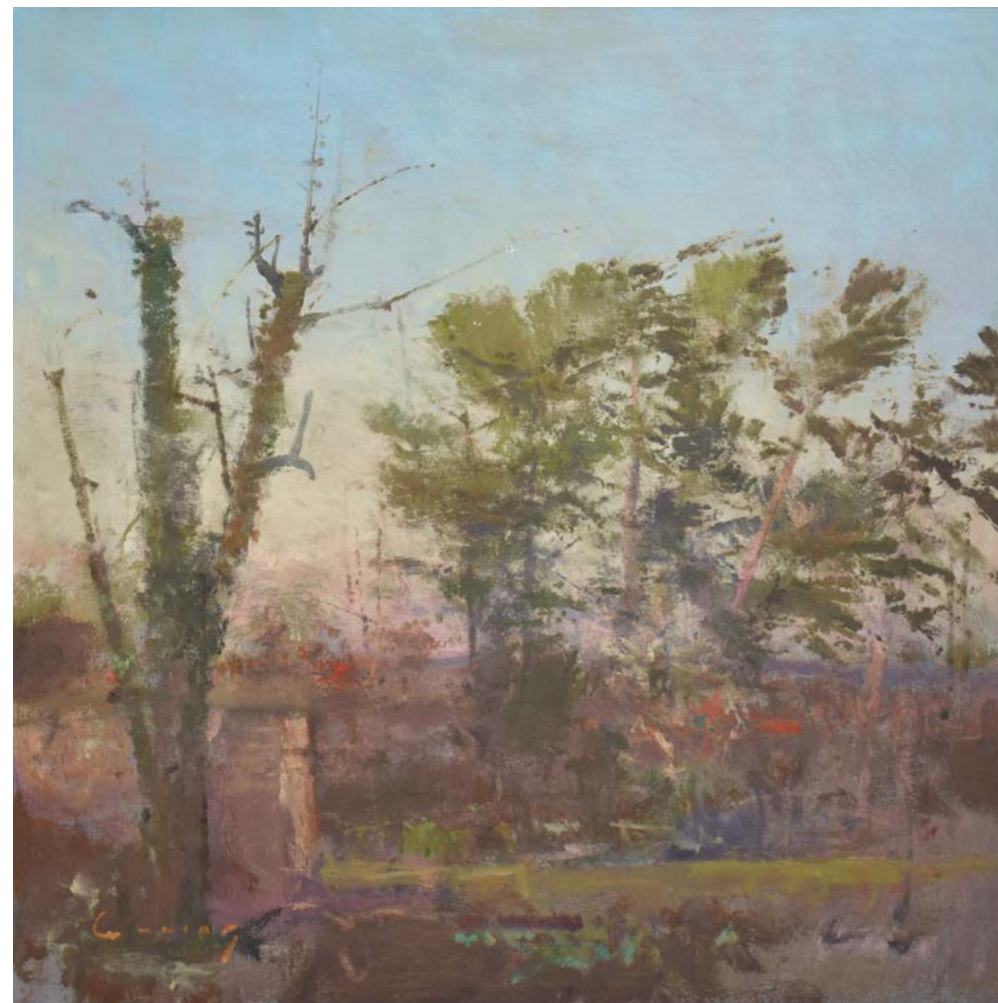
28. Morning Sea, Dymchurch | oil on panel | 20 x 24 ins



29. Bonfire, Hythe Beach | oil on panel | 8 x 16 ins



30. Oak, Indian Summer | oil on panel | 10 x 12 ins



31. Scottish Pines | oil on panel | 24 x 24 ins





32. The Harbour, Watchet | oil on canvas | 20 x 24 ins



33. Dungeness | oil on panel | 24 x 24 ins





34. Bathers, Winchelsea | oil on panel | 12 x 14 ins



**a d a m** gallery

[www.adamgallery.com](http://www.adamgallery.com)

13 JOHN STREET Bath BA1 2JL t: 01225 480406