

An abstract oil painting featuring a complex composition of layered, textured brushstrokes. The upper portion is dominated by cool tones of blue, teal, and grey, with some warmer, earthy tones interspersed. The lower portion is a broad, horizontal band of muted, earthy browns and greys. A distinct, dark, horizontal line separates the two main color fields. The overall effect is one of depth and atmospheric quality, with visible texture and a sense of movement in the brushwork.

adam gallery

FRED CUMING RA

a d a m gallery

FRED CUMING RA

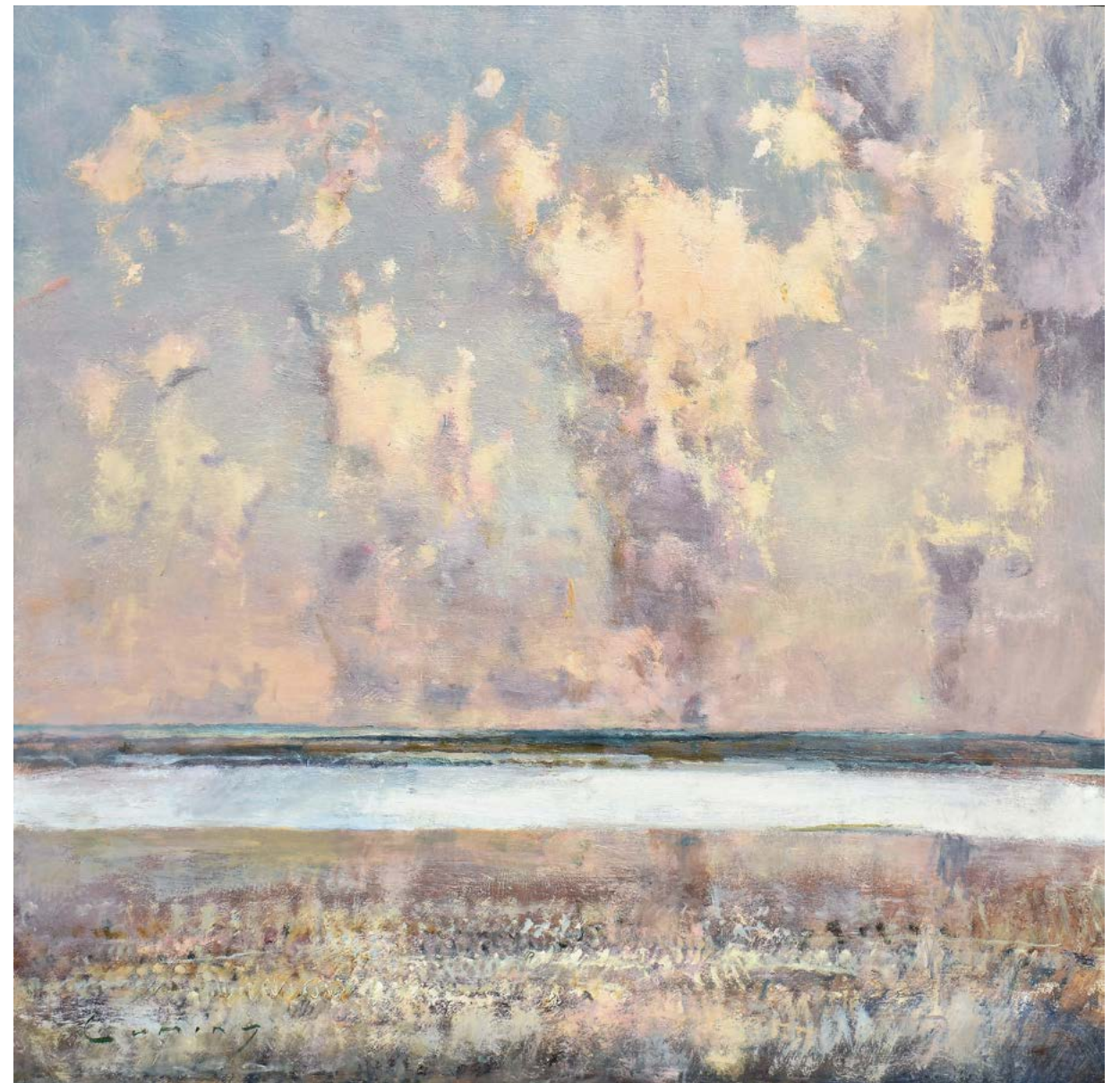
3 Northumberland Buildings Bath BA1 2JB t: 01225 480406

e: info@adamgallery.com www.adamgallery.com

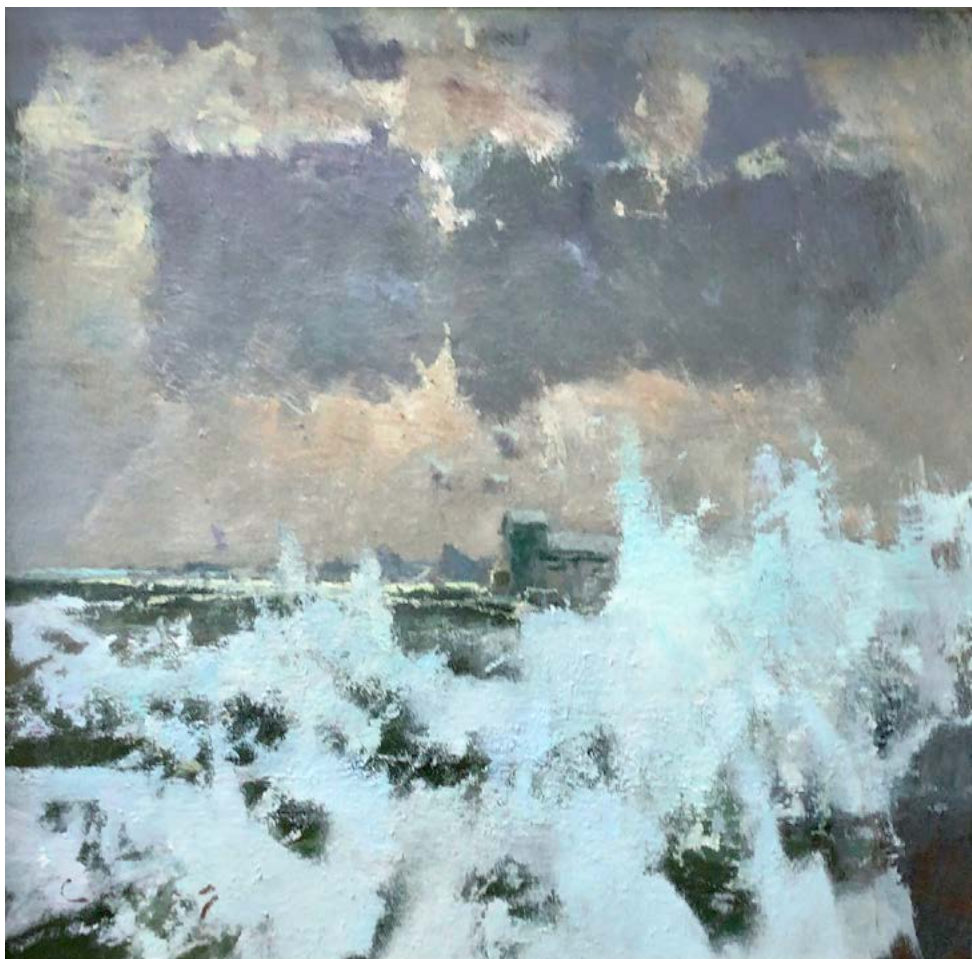
Fred Cuming RA



1. Bathers, Hythe Beach | oil on panel | 8 x 8 ins



2. Cloud Procession, Camber | oil on panel | 30 x 30 ins



3. Breaking Wave, Hythe | oil on panel | 20 x 20 ins



4. Moonlight Harbour, Falmouth | oil on panel | 12 x 24 ins



5. Moonlight, Camber | oil on panel | 16 x 16 ins



6. Autumn Clouds | oil on panel | 12 x 16 ins



7. Dawn Walker | oil on panel | 8 x 16 ins



8. Burst of Light | oil on panel | 12 x 16 ins



9. September Beach | oil on panel | 12 x 24 ins



10. Tall Ships, Falmouth | oil on panel | 16 x 16 ins



11. The Doges Palace, Venice | oil on panel | 12 x 16 ins



12. Autumn Sky, Camber | oil on canvas | 10 x 20 ins



13. Early Morning, Romney Marsh | oil on panel | 10 x 20 ins



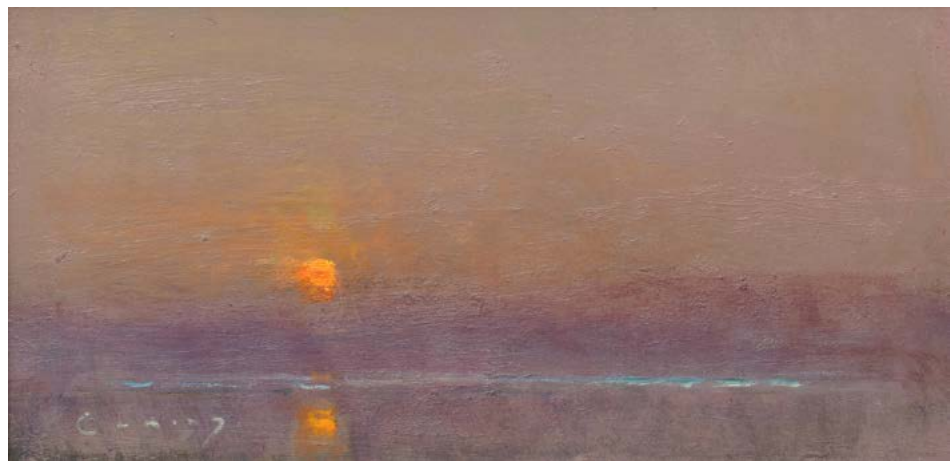
14. Squall | oil on panel | 12 x 18 ins



15. August Sky, Hastings Beach | oil on panel | 6 x 12 ins



16. Study of Light | oil on panel | 16 x 16 ins



17. Sunrise Camber | oil on panel | 6 x 12 ins



18. Low Tide, Camber | oil on panel | 20 x 24 ins



19. Calm Sea, Camber | oil on panel | 10 x 12 ins



20. Birdsong | oil on panel | 30 x 30 ins



21. Reflections, Camber | oil on panel | 6 x 12 ins



23. Midday, Camber Beach | oil on panel | 12 x 24 ins



22. Dawn, Camber | oil on panel | 8 x 10 ins



24. Morning Glory | oil on panel | 10 x 10 ins



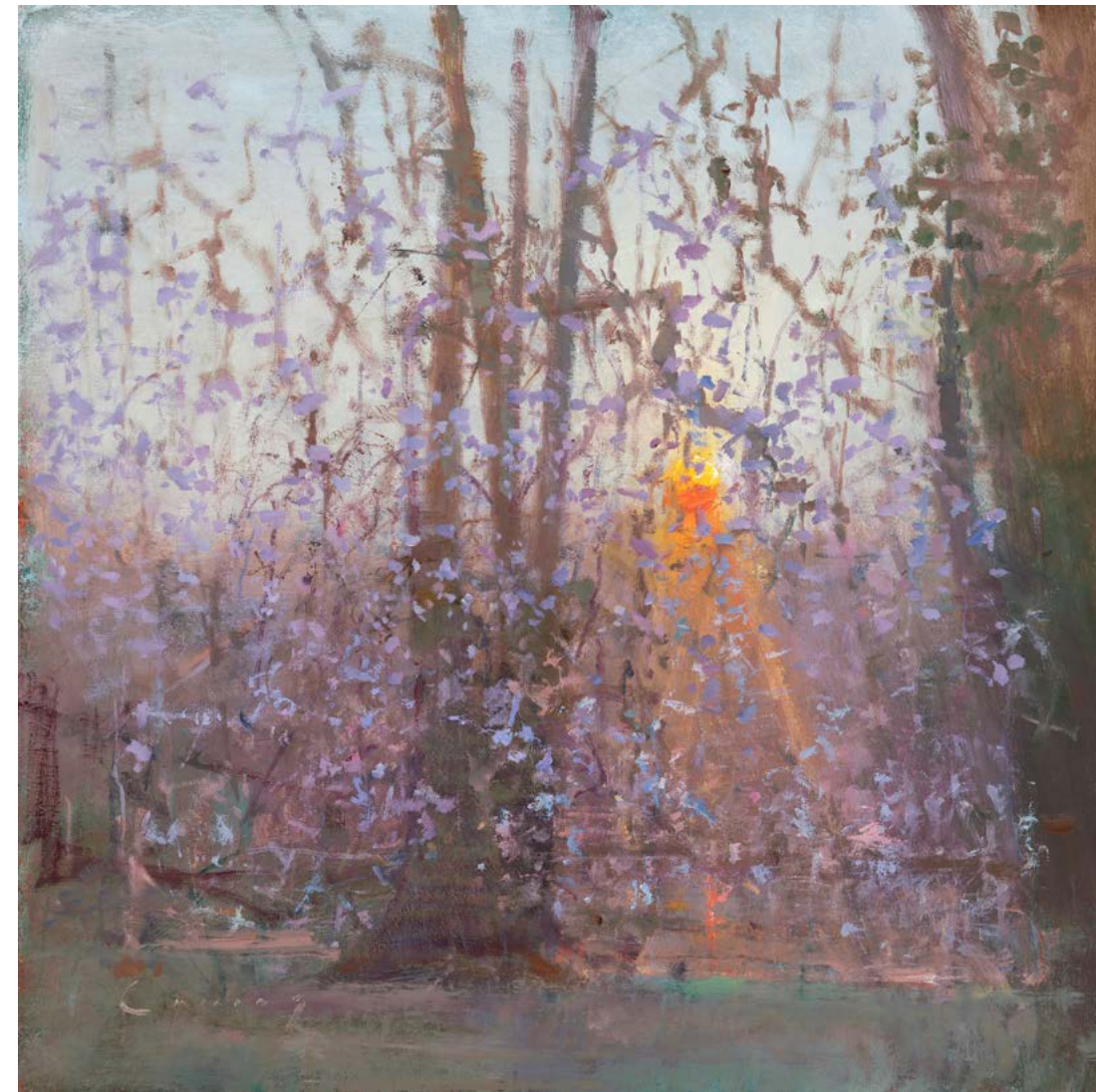
25. Spring Still Life | oil on panel | 12 x 12 ins

26. Autumn Sky, Romeny Marsh | oil on panel | 20 x 24 ins





27. Mid-morning, Camber | oil on panel | 16 x 16 ins



28. Prunus in Blossom | oil on panel | 24 x 24 ins



29. Midday, Hastings Beach | oil on panel | 8 x 8 ins



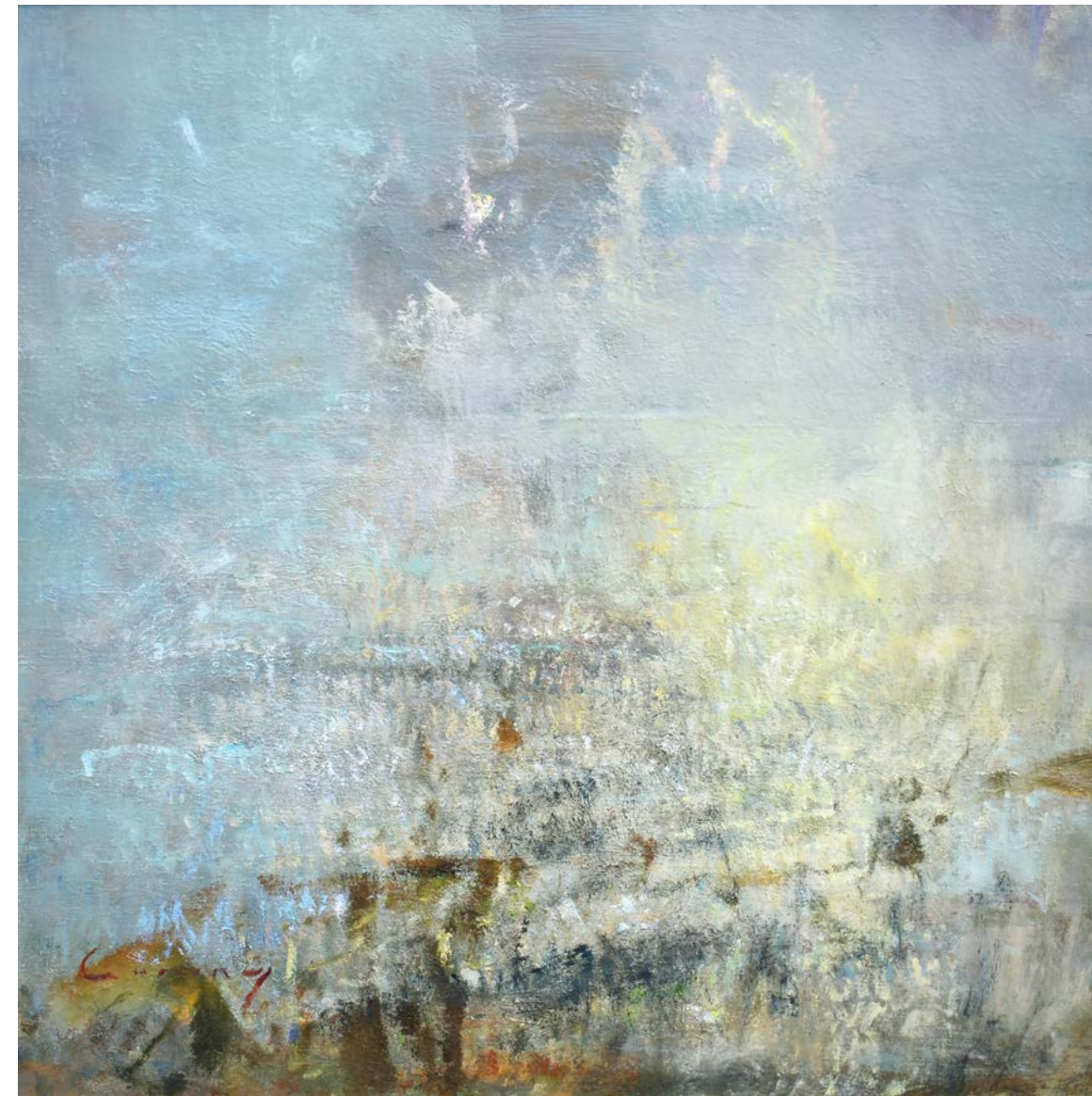
30. Bathers, Camber | oil on panel | 12 x 16 ins

31. Bonfire Angel of the South | oil on panel | 20 x 20 ins





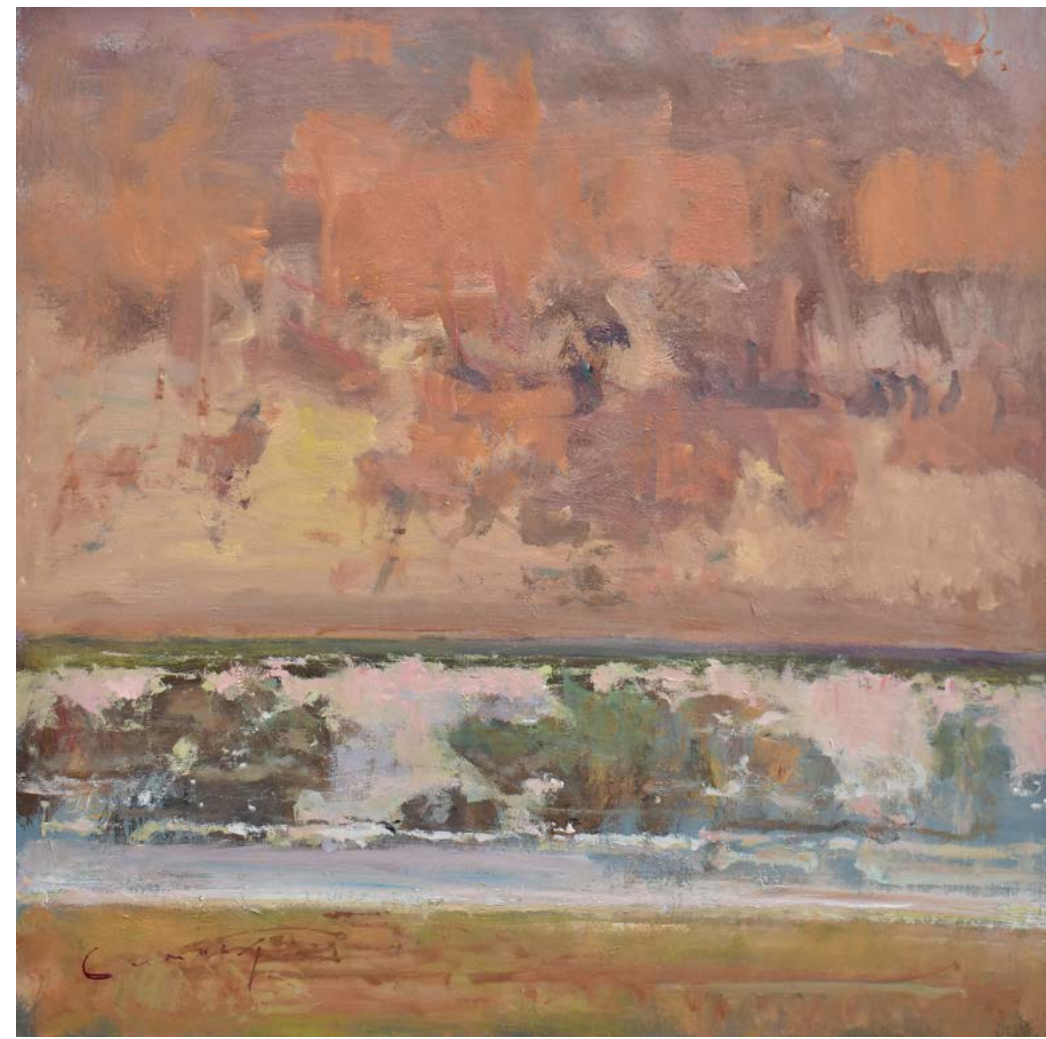
32. Cloud Study, Camber | oil on panel | 20 x 20 ins



33. Low Tide, Reflection | oil on panel | 28 x 28 ins



34. June Garden | oil on panel | 24 x 24 ins



35. Evening Light, Breaking Wave | oil on panel | 24 x 24 ins



36. Hastings Pier | oil on panel | 10 x 20 ins



37. Surf, Dungeness | oil on panel | 20 x 24 ins



38. Vase of Dog Roses | oil on panel | 10 x 12 ins

a d a m gallery

www.adamgallery.com

3 Northumberland Buildings Bath BA1 2JL t: 01225 480406