

Barbara Rae RA



a d a m g a l l e r y

Barbara Rae RA
'Arctic Paintings'

3 NORTHUMBERLAND BUILDINGS BATH BA1 2JB t: 01225 480406

e: info@adamgallery.com www.adamgallery.com

BARBARA RAE CBE RA – Arctic Paintings

Royal Academician Barbara Rae travels far and wide to find inspiration for her art. Remote areas in Spain, Italy, Ireland, South Africa, Mexico and Arizona are a few that have given rise to her studies of indigenous people and where they live, she a recorder of the passage of time. Ice floes and glaciers of the Arctic are her most recent lure.

On a study tour of Orkney, Rae discovered her namesake Dr John Rae was born there, the renowned cartographer and explorer. There and then she resolved to find out more about his exploits working for the Hudson's Bay company in the mid-1800s, how he discovered the Northwest Passage, the Rae Strait, as well as Captain Franklin's doomed expedition. Thus began a project that was to last several years and involve her in four voyages deep into the Arctic, around the coastline and islands.

Rae worked then as she does normally from sketchbook studies, not photographs, though the latter proved usual as an *aide-memoire* when keeping a safe distance from hungry polar bears, her cabin doubling as mini-studio. Larger works were created in her Edinburgh studio.

Respected internationally as a great colourist, admirers and collectors will notice how her palette has changed dramatically in response to her Arctic surroundings. Moreover, her images capture a place altering fast as global warming and humankind's detritus takes its toll on a once pristine wilderness.

Barbara Rae's extensive research culminated in a highly successful and praised exhibition at the Royal Scottish Academy during the 2018 Edinburgh International Festival, later transferred in part to the Pier Gallery in Orkney and the Canadian High Commission at Canada House in London. Adam Gallery is honoured and delighted to show selected works from Rae's Arctic studies, many exclusive to us, not exhibited before.

1. Ilulissat Clouds

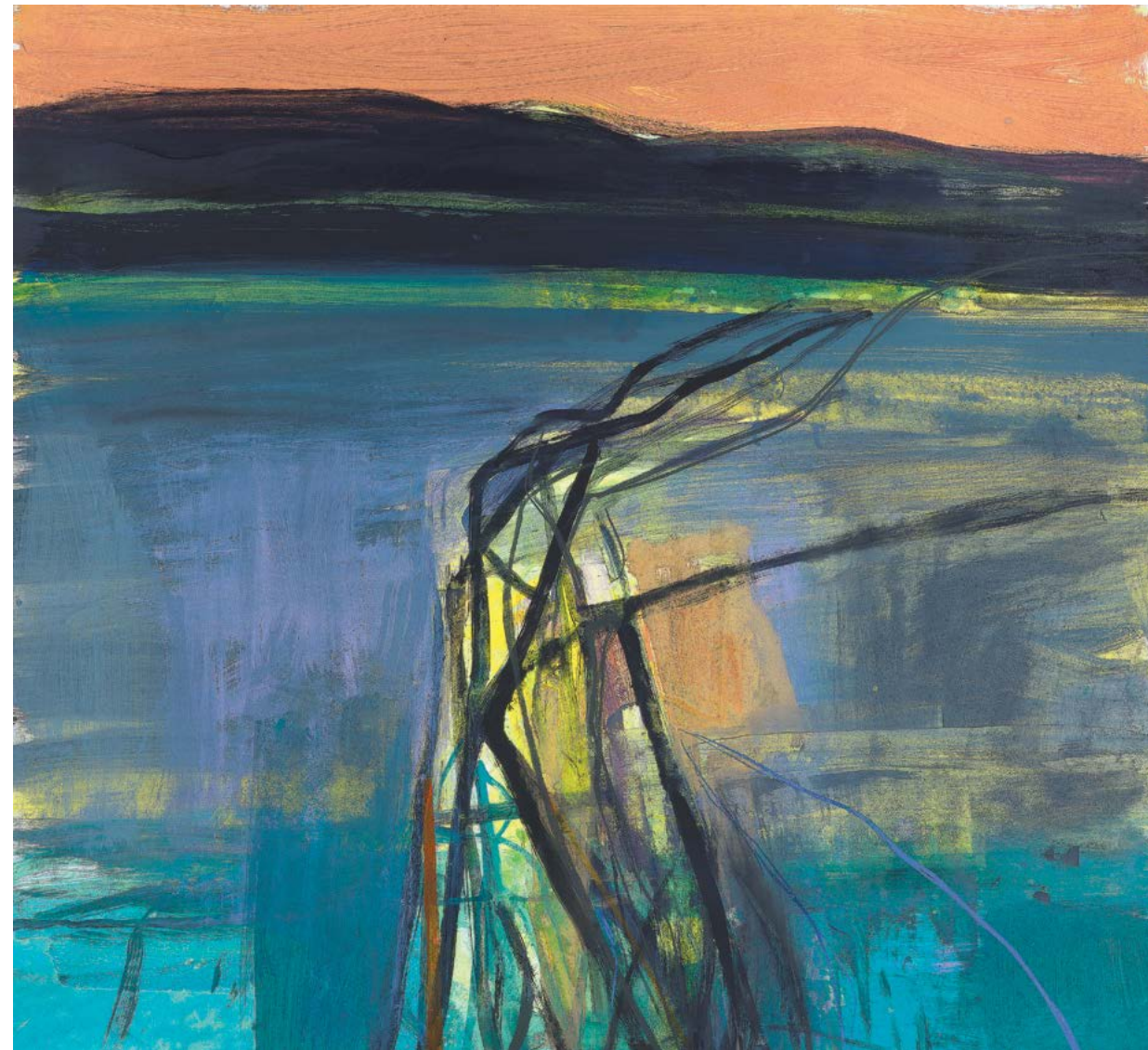
Mixed media on paper
112 x 119 cm





2. Arctic Night

Mixed media on paper
15 x 15 cm



3. High Moor - Kangerlussuaq

Mixed media on paper
109 x 118 cm



4. Ice Field

Mixed media on paper
15 x 15 cm

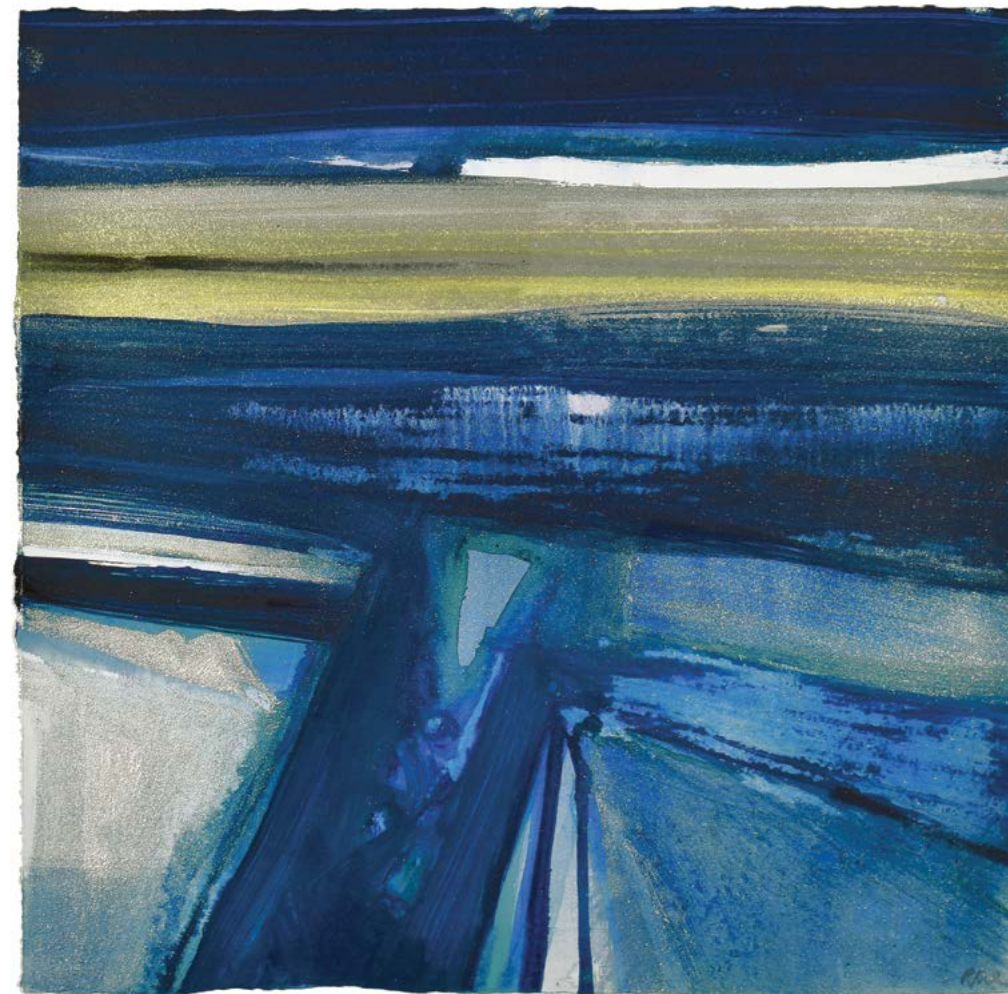


5. Tundra and Ice Cap

Mixed media on paper
38 x 40 cm



6. Dark Reflection
Mixed media on paper
15 x 15 cm



7. Shard
Mixed media on paper
48 x 48 cm

8. Ice Flow – Peel Sound
Mixed media on canvas
183 x 183 cm





9. Fjord Bergs

Mixed media on paper
14 x 17 cm



10. Passage Ilulissat

Mixed media on paper
38 x 41 cm



11. Through the Icebergs

Mixed media on paper
11 x 13 cm



12. Baffin Bay

Mixed media on paper
122 x 110 cm



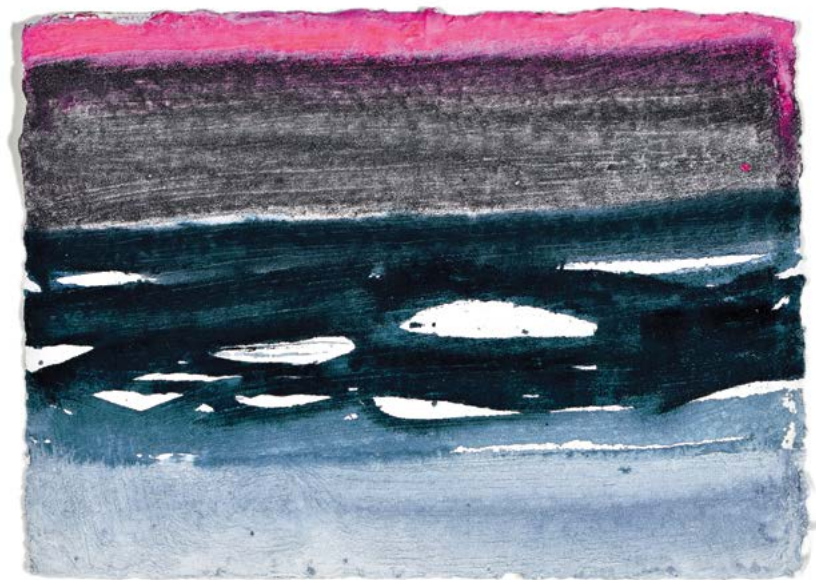
13. Ilulissat Ice Cap

Mixed media on paper
11 x 13 cm



14. Loose Ice - Bellot Strait

Mixed media on paper
43 x 43 cm



15. Through the Ice

Mixed media on paper
11 x 15 cm



16. Tundra on Devon Island

Mixed media on paper
38 x 41 cm



17. Cloud Formation - Baffin

Mixed media on paper
14 x 19 cm



18. Ilulissat

Mixed media on paper
118 x 109 cm



19. Ice Gap

Mixed media on paper
11 x 13 cm



20. Sailing through Peel Sound

Mixed media on paper
126 x 118 cm



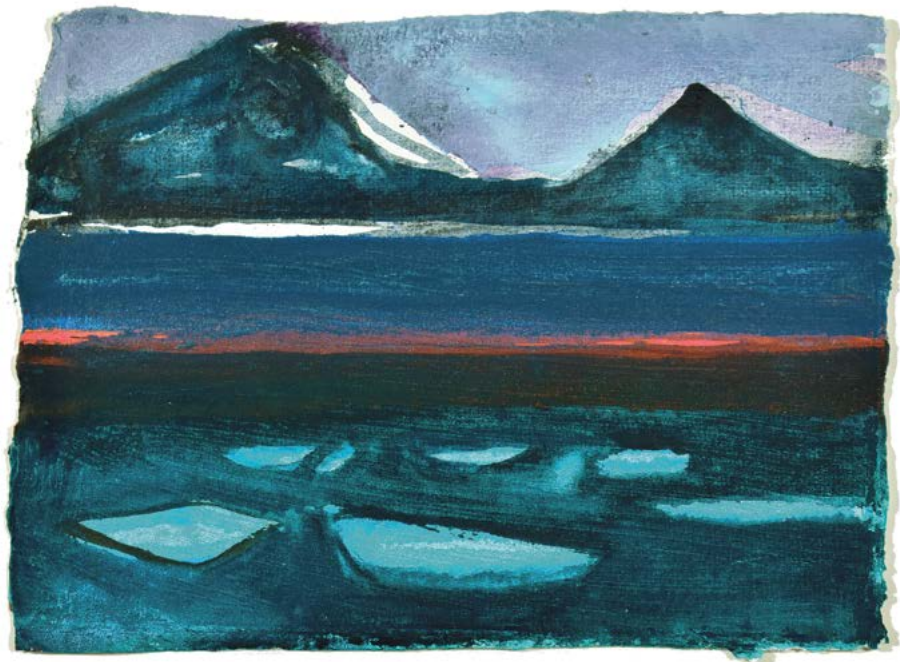
21. Northwest Passage No.5

Mixed media on paper
15 x 15 cm



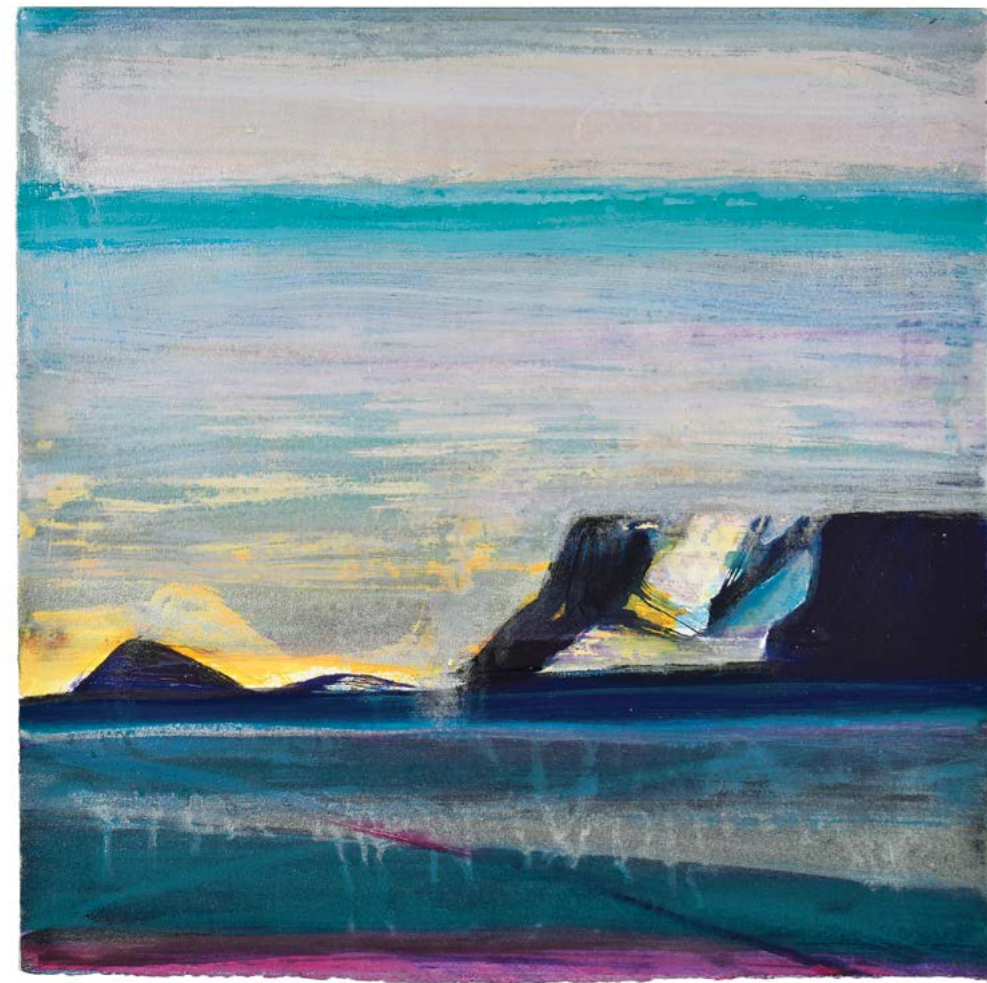
22. Glacier - Melville Strait

Mixed media on paper
15 x 15 cm



23. Dark Passing

Mixed media on paper
14 x 19 cm



24. Morning at Qikiqtarjuaq

Mixed media on paper
43 x 43 cm



25. Broken Ice

Mixed media on paper
14 x 19 cm

26. Light - Passing Peel Sound

Mixed media on paper
109 x 116 cm





27. Broughton Island

Mixed media on paper
11 x 17 cm



28. Ice Wall

Mixed media on paper
109 x 118 cm



29. Ice Cliffs

Mixed media on paper
15 x 15 cm



30. Glacier - Lancaster Sound

Mixed media on paper
15 x 15 cm



31. Russell Glacier - Late Afternoon

Mixed media on paper
13.5 x 15.5 cm



32. Approaching Crocker Glacier

Mixed media on paper
108 x 114 cm

34. Sea Ice - Disko Bay

Carborundum print A/P (Ed. 40)

Image: 35 x 35 cm

Paper: 39.5 x 38 cm



33. Edge of the Glacier

Mixed media on paper

20 x 22 cm



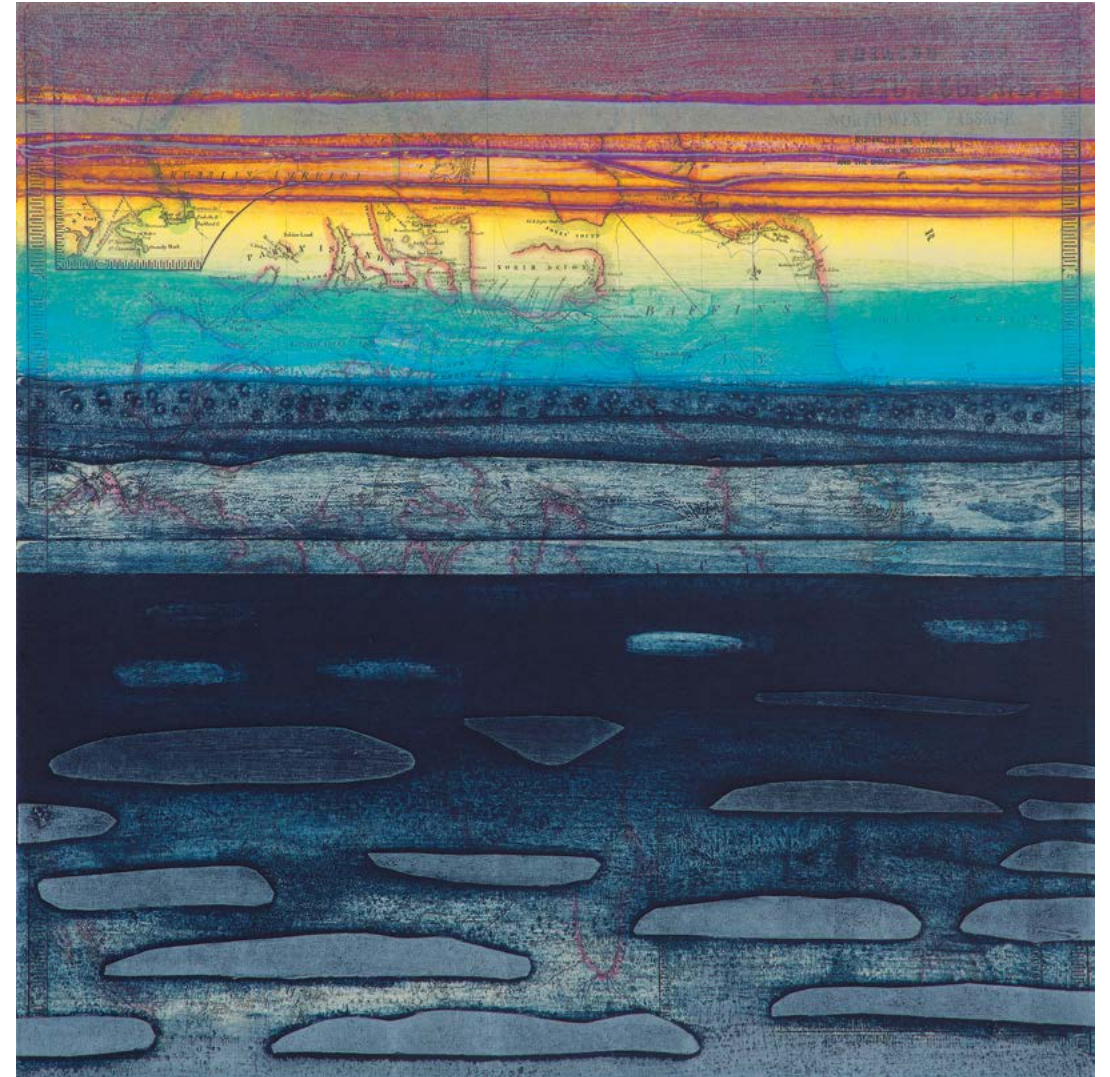
35. Sea Ice - Northwest Passage

Carborundum and chin colle

Print A/P (Ed. 40)

Image: 59 x 59 cm

Paper: 90 x 76 cm



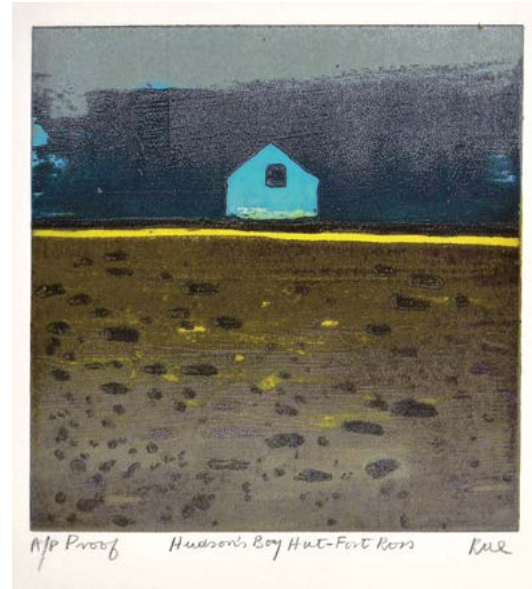
36. Iceberg - Disko Bay

Carborundum print A/P (Ed. 40)
Image: 21.5 x 21.5 cm
Paper: 40 x 38 cm



37. Hudson's Bay Hut - Fort Ross

Carborundum print A/P (Ed. 40)
Image: 21.5 x 21.5 cm
Paper: 40 x 36 cm



38. Dark Sea - Peel Sound

Monotype
Image: 37.5 x 37.5 cm
Paper: 68 x 56 cm





39. Ilulissat No.5

Monotype
Image: 37.5 x 37.5 cm
Paper: 68 x 56 cm



40. Ilulissat No.4

Monotype
Image: 37.5 x 37.5 cm
Paper: 68 x 56 cm

Selected Solo Exhibitions:

Rae's most recent solo exhibition was held at the Royal Scottish Academy for the 2018 Edinburgh International Festival, and transferred to London. They began in Rae's second year as a student, and since held in Edinburgh, Glasgow, London annually, annually at the Royal Academy of Arts, London. Others include Pallant House Gallery, Chichester, Henley-on-Thames, St Andrews, Aberdeen, and Cambridge Universities, Bath, Manchester, Belfast, Dublin, Gibraltar, Oslo, Chicago, New York, Washington, Hong Kong, and Mexico City.

Photo: © Ian Ritchie CBE RA



Professional Affiliations:

1986	Member of the Art Panel, Council of National Academic Awards
1986-90	Trustee, Arts Education Trust
1986-90	Member of the Royal Society of Painters and Watercolours
1991	Member, Board of Friends of the Royal Scottish Academy
1992	Judge Paisley Drawing Biennale
1992-94	Member of the Board of Friends of the Royal Scottish Academy
1992-94	Member of the Merchandise Committee
1993	Curator and Hanger Royal Scottish Academy Student Exhibition
1993	Vice President, Royal Society of Painters and Watercolours
1993-94	Curator and hanger, Royal Scottish Academy Annual Exhibition
1995-05	Member, Royal Fine Art Commission of Scotland
1996	Member, Board of Trustees, Hospitalfield House, Arbroath, Scotland
1996	Member of the Royal Academy of Arts
1996	Member of Council of the Royal Academy of Arts
1998	Member, Board of the British School, Rome
1998	Lecturer for the British Council in Japan
2005-06	Member of the Council of the Royal Academy of Arts
2008-10	Chairperson, Board of Alumni, Edinburgh College of Art
2014	Patron Art in Health Care
2014	Member Royal Academy of Arts Council

Selected Awards:

1968	Scottish Arts Council Travel Award
1975-81	Major Scottish Arts Council Award
1977	Guthrie Medal
1979	May Marshall Brown Award – RSW Centenary Exhibition
1983	Royal Scottish Academy – Sir William Gillies Travel Award
1983	Caloustie Gulbenkian Foundation Printmaking Award
1989	Alexander Graham Munro – Royal Scottish Society of Painters & Watercolours
1990	Hunting Group Prize winner
1990	The Scottish Post Office Board Award – Royal Scottish Academy
1990	The Scottish Amicable Award – Royal Scottish Institute
1990	W.J. Burness Award – Royal Scottish Academy
1999	CBE – Commander of the British Empire
1999	Honorary Doctorate of Arts – Napier University, Edinburgh
2003	Honorary Fellowship of the Royal College of Art
2003	Honorary Doctorate of Literature – Aberdeen University
2008	Honorary Doctorate of Literature – St Andrews University
2016	Honorary Fellow of the Royal Scottish Institute of Architects





a d a m gallery

www.adamgallery.com

3 NORTHUMBERLAND BUILDINGS BATH BA1 2JB