

BARBARA RAE



adam gallery

a d a m gallery

BARBARA RAE RA

24 CORK STREET London W1S 3NJ t: 0207 439 6633

13 JOHN STREET Bath BA1 2JL t: 01225 480406

e: info@adamgallery.com www.adamgallery.com

Many of Barbara's recent paintings are based around Casarabonela, a small village close to the 'Sierra de las Nieves' National Park near Málaga in Southern Spain. She often works when the sun is rising or setting, as the violets and blues in the landscape contrast with the shafts of bright light and make the shapes around her shift and change. The colours of paintings such as 'Zalea Fields' and 'Taivilla' show the vibrancy and warmth of the area.

Barbara is attracted by the rich and historic culture in this area, that the 'Costa del Sol' influence hasn't reached. The farmers mainly grow almonds and olives there and they pass by with mules and bells on sheep and goats. She explains that her drawings have no relevance without an appreciation of the people, the atmosphere and activities around her.

Although the landscape is often the inspiration for Barbara's painting, she does not want to be seen as a 'landscape painter'. In fact, she sees the landscape as a starting point for creating something totally new in her studio. This is where she starts to explore new complex combinations of colour, light and tone. She mixes delicately drawn structural sections with veils of bold tone and colour. They seem spontaneous but are the result of the mastery of her technique.

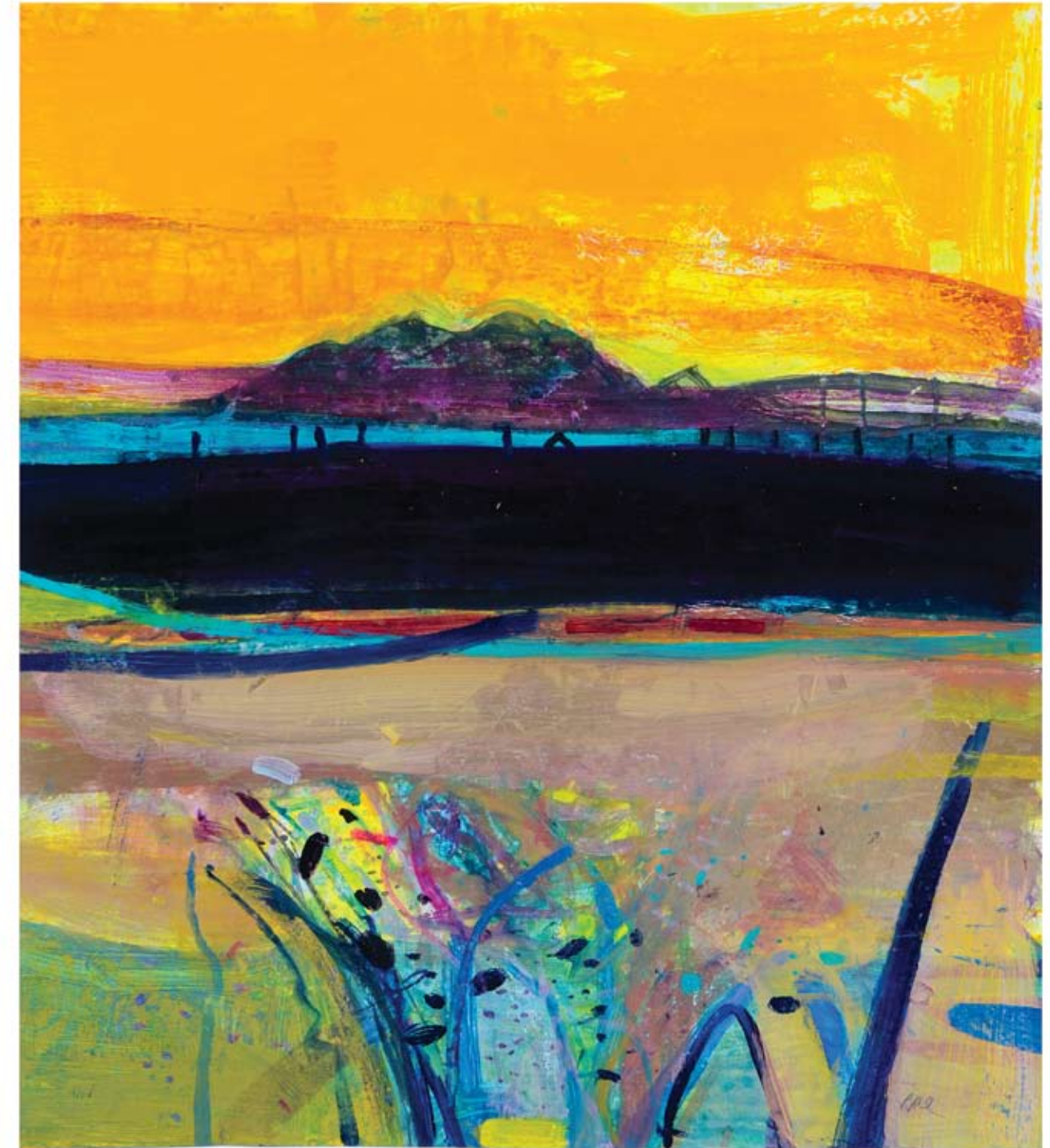
'Painting is enjoyable,' explains Barbara, 'I'm not a landscape painter although I do draw inspiration from landscapes. In the studio it's different: it's a creative process, a template, a starting point for creating something new where materials and surfaces come in to play – I jump off from that point to a place where there are no boundaries – it is a catalyst that sets off the creative process of playing with shapes and colour – not just thinking about reproducing a landscape.'

Barbara returns again and again to the same places, such as this area of Spain, or the west coast of Ireland where she is based at the Ballinglen Arts Foundation in Ballycastle, County Mayo. Barbara is drawn to dramatic landscapes that have a strong sense of history, such as the views of the coastline at 'Ardmore Point' or 'Achill Bay'.

Barbara retains an amazing energy and capacity for adventure. She says: 'There are always new places that are fantastically interesting to explore and discover. Maybe this year it will be the Extremadura area (north of Andalucia) or areas of industry by the docks'. Whatever she chooses, we know it will be infused with Barbara's unique 'joie de vivre' and we can't wait to see the results.

One of Britain's leading contemporary painters Barbara Rae is an artist highly sought after, a Royal Academician and the recipient of numerous awards including three honorary doctorates and Commander of the British Empire (CBE). Many of her paintings can be found in public collections, including the Scottish National Gallery of Modern Art, Edinburgh; the Whitworth, Manchester; Hugh Lane Gallery, Dublin and the National Museum of Women in the Arts, Washington.

Barbara Rae is on the hanging committee for the Royal Academy Summer Exhibition 2012 and she has been given the honour of curating her own special gallery by invitation of Scottish and Irish artists.



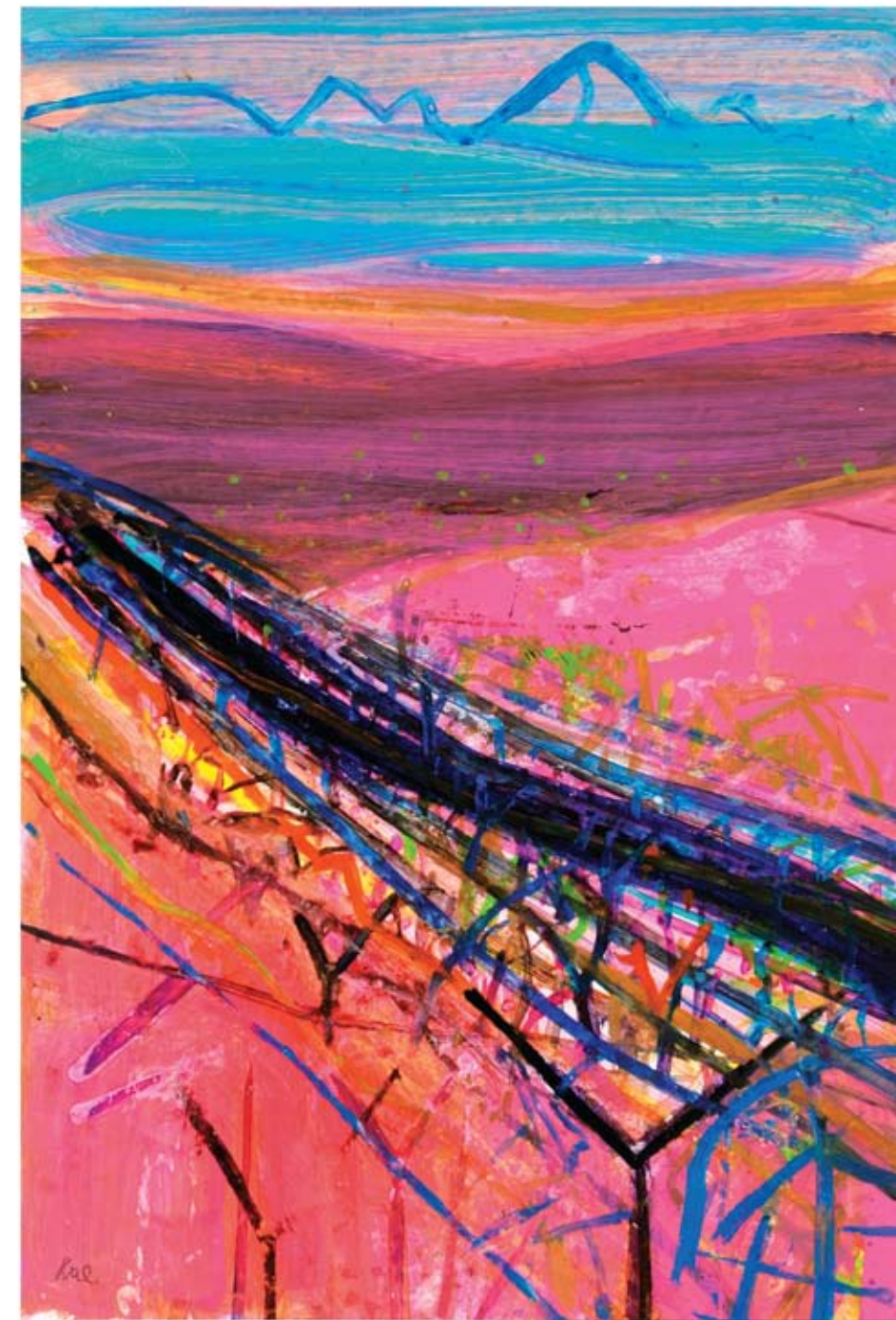
1. Barranagh
mixed media on paper 121 x 100 cm



2. Stonefield
mixed media on paper 80 x 130 cm



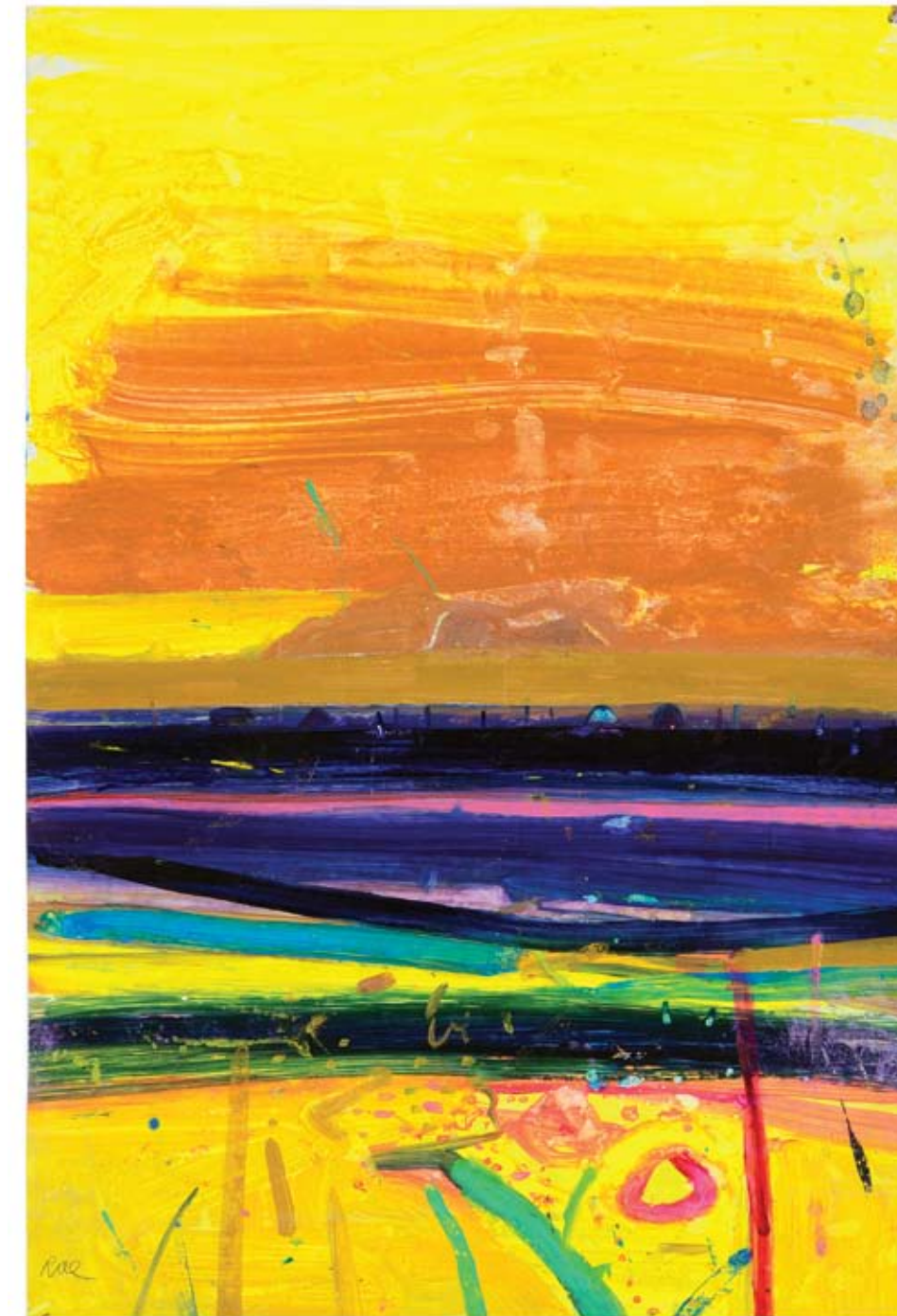
3. Casarabonela
mixed media on paper 23 x 25.5 cm



4. Caicunes
mixed media on paper 105 x 71 cm



5. Alozaina - Sierra
mixed media on paper 14 x 19 cm



6. Achill Bay
mixed media on paper 105 x 71 cm



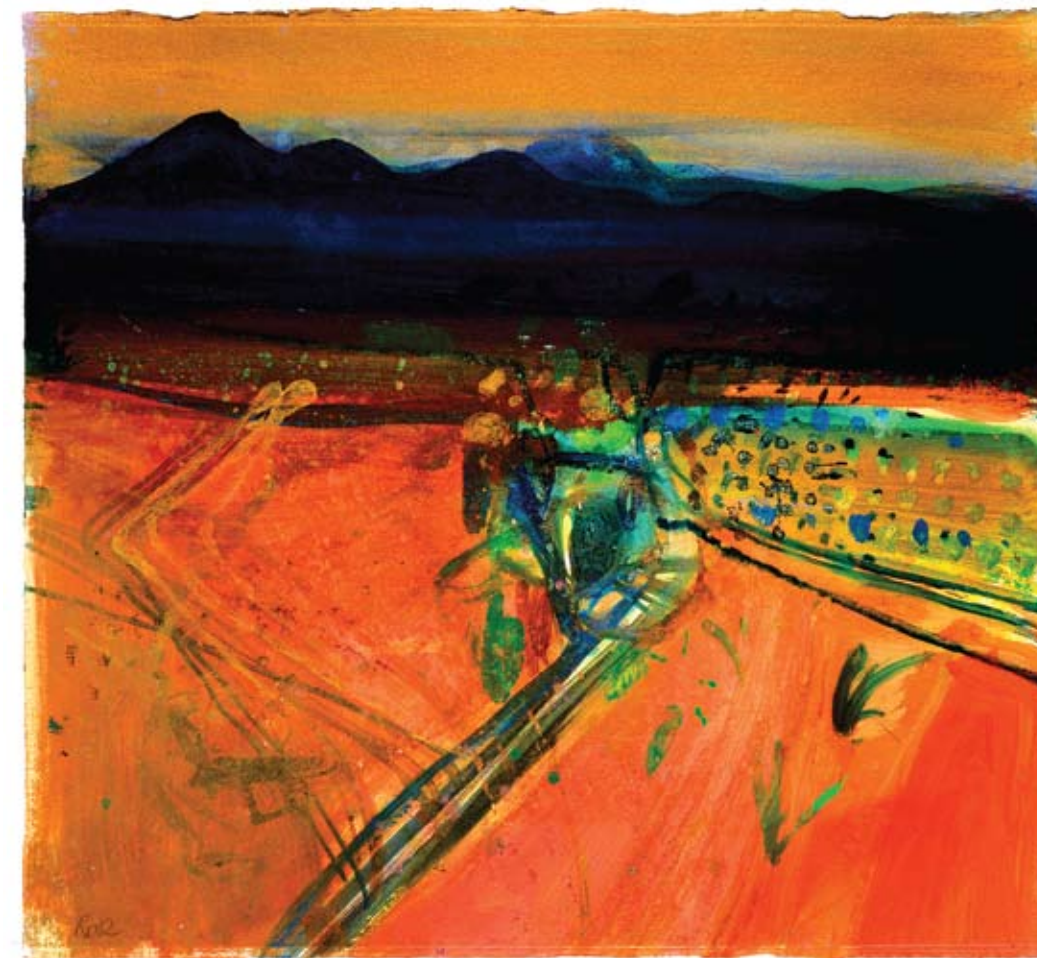
7. Carrowkilleen
mixed media on paper 100 x 119 cm



8. Provence Path
mixed media on paper 15 x 19 cm



9. Last Sunflowers Maubec
mixed media on paper 15 x 21 cm



10. Alozaina Path
mixed media on paper 56 x 62 cm



11. Kerry Beach
mixed media on paper 16 x 21 cm



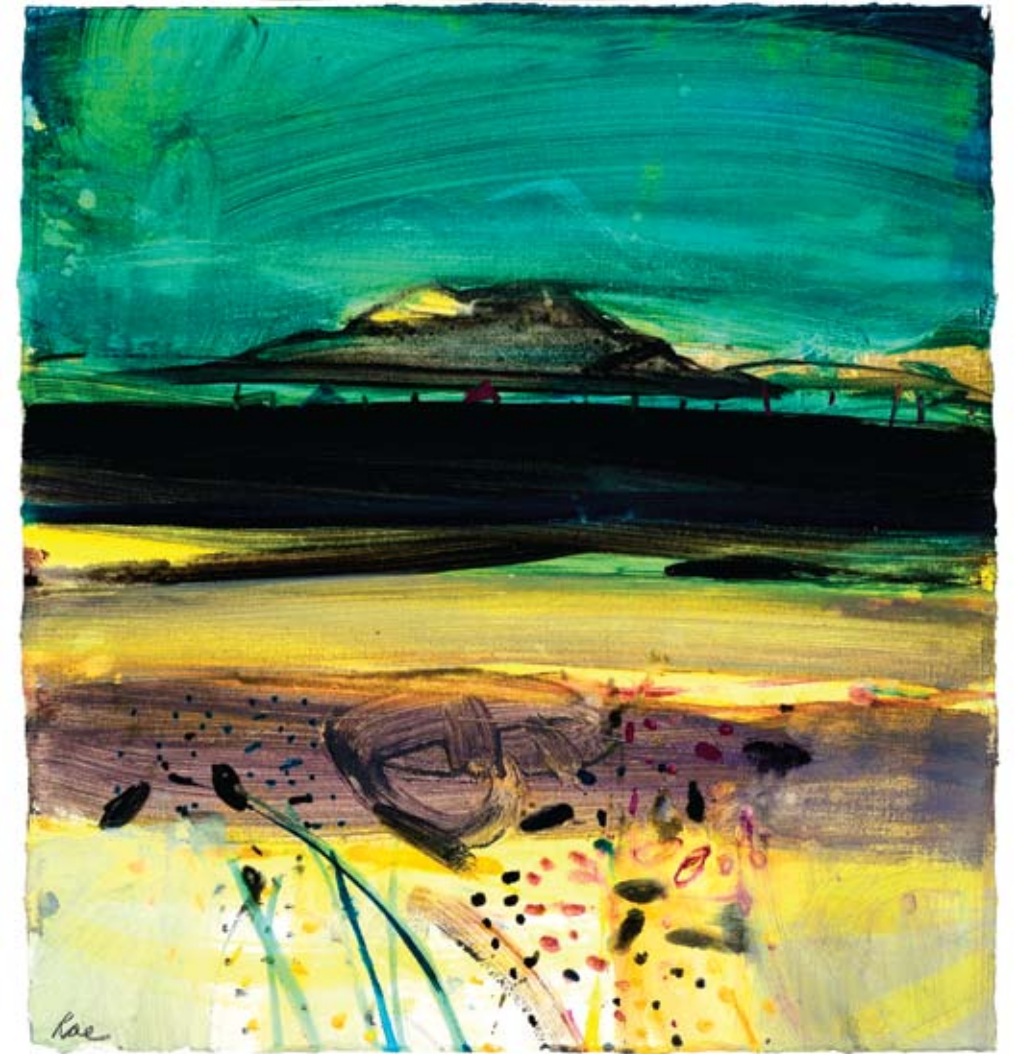
12. Kallala Opening
mixed media on paper 105 x 71 cm



13. Ardmore Point
mixed media on paper 102 x 122 cm



14. Gallowhill
mixed media on paper 11 x 22 cm



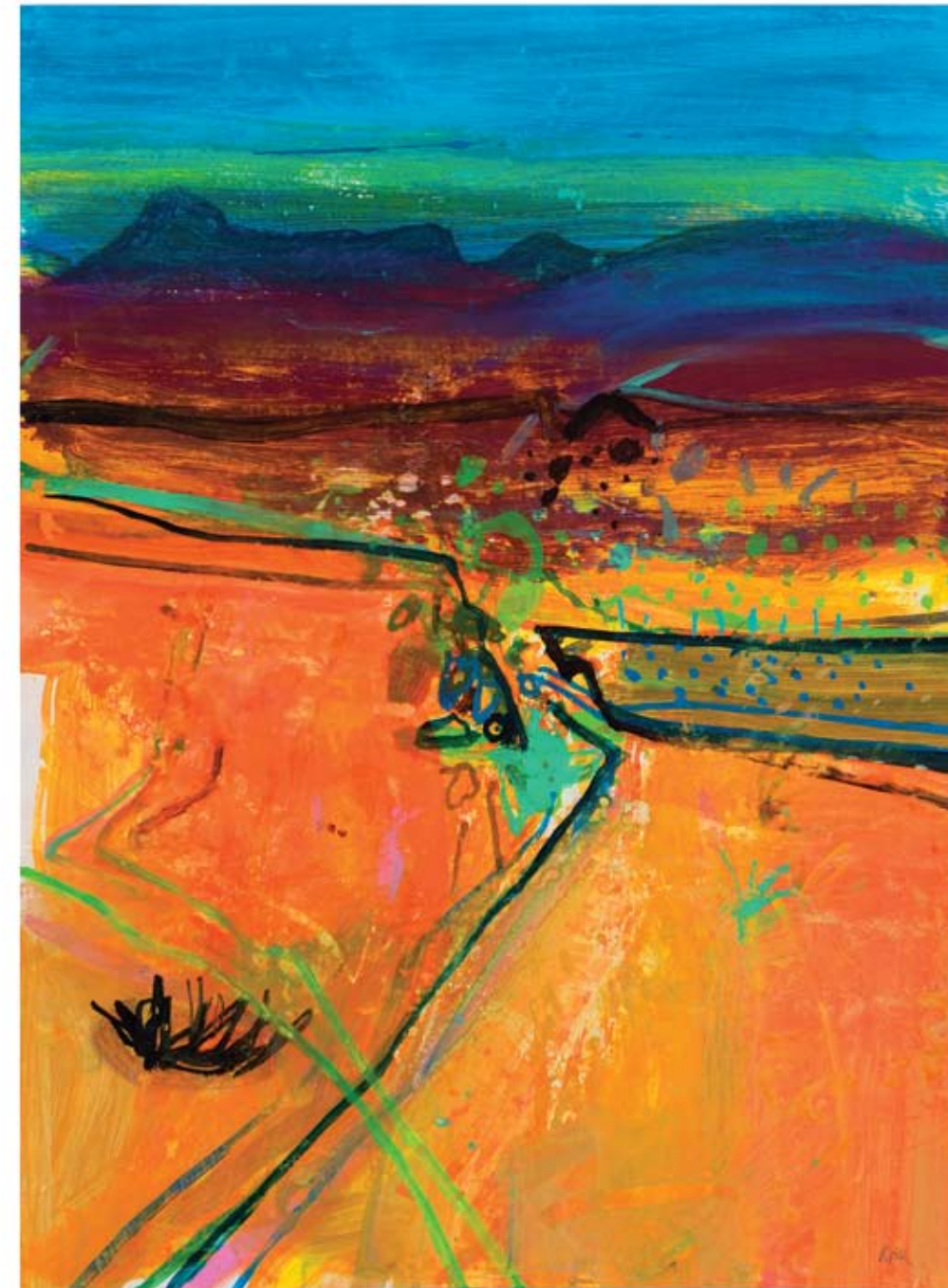
15. Curraghboy
mixed media on paper 62 x 57 cm



16. La Cañada - Winter Terraces
mixed media on paper 15 x 19 cm



17. Terraces Casabonela
mixed media on paper 14.5 x 20 cm



18. Taivilla
mixed media on paper 104 x 78 cm



19. Robion Path
mixed media on paper 16 x 24 cm



20. Sierra de las Nieves
mixed media on paper 21 x 28 cm



21. Carrowkilleen
mixed media on paper 56 x 66 cm



22. Inlet Valentia
mixed media on paper 38 x 29 cm



23. Achill Gold Bay
mixed media on paper 105 x 71 cm



24. Málaga Field
mixed media on paper 15 x 21 cm



25. December Field
mixed media on paper 13 x 20 cm



26. Zalea
mixed media on paper 57 x 64 cm



27. Zalea Field
mixed media on paper 100 x 102 cm



28. Carowtrasna
mixed media on paper 57 x 61 cm



29. Málaga Field
mixed media on paper 57 x 62 cm



30. Autumn - La Cañada
mixed media on paper 15 x 18 cm



31. Zelea - Terraces
mixed media on paper 12 x 18 cm



32. Casarabonela
mixed media on paper 55.5 x 68.5 cm



33. Provence Autumn
mixed media on paper 25.5 x 29 cm



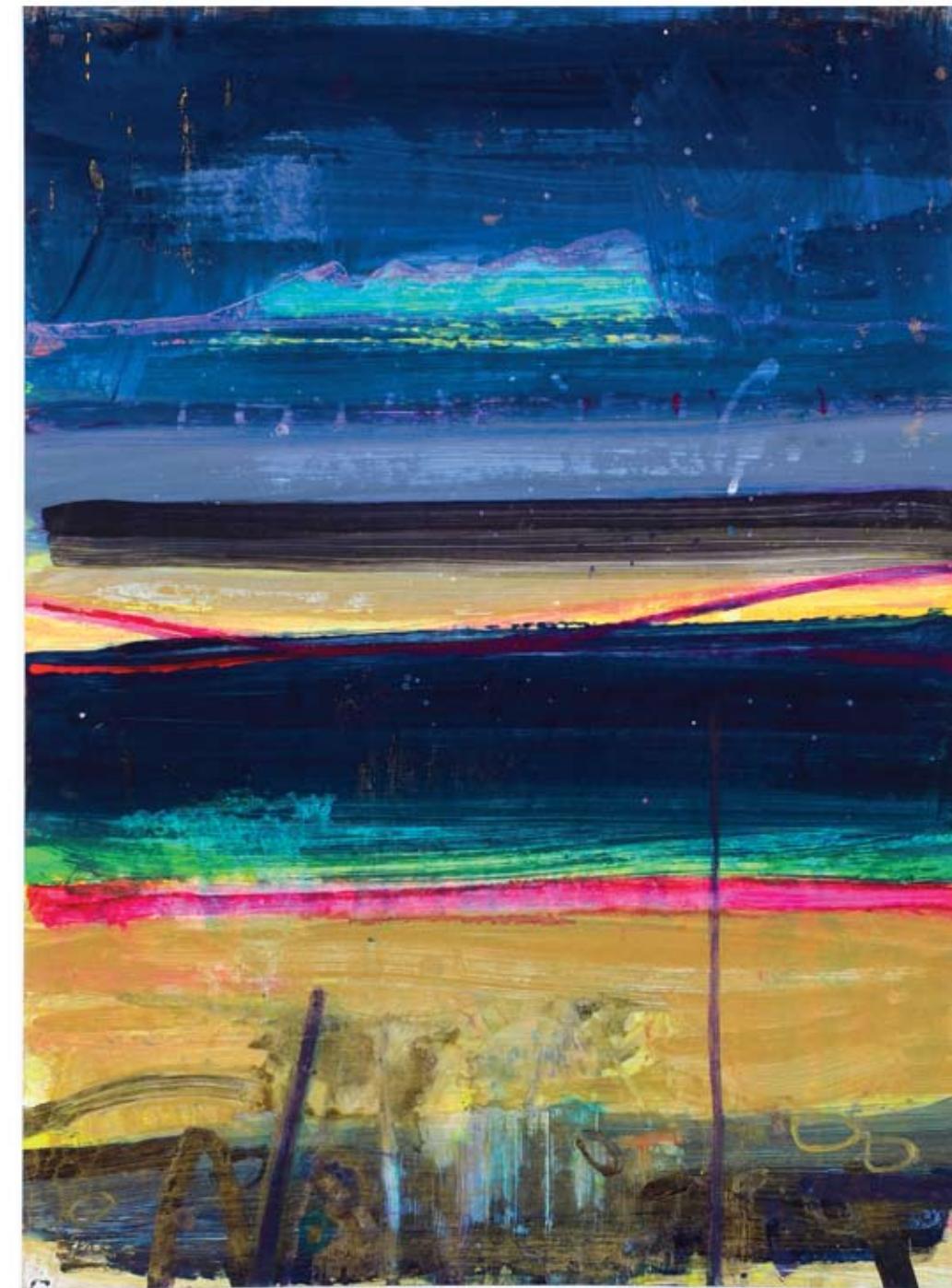
34. Night Vineyard
mixed media on paper 20.5 x 25.5 cm



35. Alozaina Terraces
mixed media on paper 57 x 63 cm



36. Sands at Lacken
mixed media on paper 29 x 30.5 cm



37. Achill Rain
mixed media on paper 105 x 74 cm



38. Finca
mixed media on paper 16 x 23 cm



39. Sierra Cortijo
mixed media on paper 24 x 27 cm



40. Moyrahan
mixed media on paper 57 x 60 cm



41. Winter Terraces
mixed media on paper 26 x 29 cm



42. Foreshore Achill
mixed media on paper 105 x 78 cm

Selected Awards

1968	Arts Council England
1975–81	Major Scottish Arts Council Award
1977	Guthrie Medal, RSA
1979	May Marshall Brown Award, RSW Centenary Exhibition
1983	RSA, Sir William Gillies Travel Award
	Calouste Gulbenkian Printmaking Award
1989	Alexander Graham Munro, RSW
1999	Honorary Doctorate from Napier University, Edinburgh.
1990	Hunting Group Prizewinner
	The Scottish Post Office Board Award, RSA
	The Scottish Amicable Award, RGI
	W. J. Burness Award, RSA
2003	Honorary Doctorate from Aberdeen University
	Honorary Fellowship from Royal College of Art, London
2008	Honorary Doctorate from St. Andrew's University

Corporate Collections

Bank of England
Bank of Scotland
Baring Asset Management, London
British Rail
BZW, London
Daily Record, Glasgow
Electra, London
Lazards, London
Lazard Freres, London
Lloyds TSB Group plc, London
MacRoberts, Glasgow
Merchant Bank, Basle
Robert Fleming Holdings Ltd, London
Ross Harper & Murphy
Royal Bank of Scotland
Scottish Life Assurance Company, London
Sheraton Inns
SIBEC, Scotland
Stakis plc
Standard Life
Trustees Savings Bank
W. J. Burness & Co., Edinburgh

Professional Affiliations

1986	Art Panel, CNAA
1986–90	Trustee, Arts Education Trust
	Member, RSW Council
1991	Board of The Friends of the Royal Scottish Academy
1992	Judge, Paisley Drawing Biennale
1992–4	Member, Board of Friends of RSA
	Member, Merchandise Committee, RSA
1993	Curator and Hanger, Royal Scottish Academy Student Exhibition
	Vice President (East) RSW
1993–4	Curator and Hanger, Royal Scottish Academy Annual Exhibition
1995	Appointed Member, Royal Fine Art Commission for Scotland
1996	Appointed Board of Trustees, Hospitalfield House, Arbroath, Scotland

Public Collections

Arts Council of the Isle of Man
Aberdeen Art Gallery
Birmingham City Art Gallery
British Museum, London
City Arts Centre, Edinburgh
Contemporary Art Society, London
Derby Museum and Art Gallery
Dundee Art Gallery
Dundee University
Edinburgh City Schools Collection
Edinburgh Festival Theatre
Fleming Wyfold Art Foundation
Glasgow Museum
Gracefield Arts Centre, Dumfries
Highland Regional Council
Hunterian Art Gallery, University of Glasgow
Isle of Man Arts Council
Kelvingrove Art Gallery and Museums, Glasgow
Leeds City Education Department
Lillie Art Gallery, Milngavie
McLaurin Art Gallery, Ayr
Museum of Art for Women, Washington DC
New College, Cambridge
Perth Museum and Art Gallery, Scotland
Scottish Arts Council
Scottish National Gallery of Modern Art, Edinburgh
Universities of Stirling, Edinburgh, Glasgow, Warwick, York, Aberdeen and St Andrews
Whitworth Art Gallery, Manchester

Selected Solo Exhibitions

1967	New 57 Gallery, Edinburgh
1969	University of York
1971	New 57 Gallery, Edinburgh
1974	University of Aberdeen, Aberdeen Art Gallery
1975	Peterloo Gallery, Manchester
1976	Stirling Gallery, Stirling
	Greenock Arts Guild
1977	Gilbert Parr Gallery, London
1978–9	University of Edinburgh
1979	The Scottish Gallery, Edinburgh
1983	The Scottish Gallery, Edinburgh
1985	Wright Gallery, Dallas, Texas, USA
1986	Leinster Fine Art, London
1987	The Scottish Gallery, Edinburgh
	Glasgow Print Studio
1988	The Scottish Gallery, Edinburgh
1989	Landmarks and Docklands, The Scottish Gallery, London
1990	The Spanish Paintings, The Scottish Gallery, London
1991	Perth Museum and Art Gallery
1992	Earth Pattern, William Jackson Gallery, London
1993	The Reconstructed Landscape, Highland Regional Council,
	touring north Scotland
1994	Théâtre Alexandre Dumas, Saint-Germain-en-Laye
	Art First, London
1995	Barbara Rae, Edinburgh Festival Exhibition,
	The Scottish Gallery, Edinburgh
	Jorgensen Fine Art, Dublin, Ireland.
1996	Art First, London
	Waxlander Gallery, Santa Fe, New Mexico, USA
1997	New Paintings (The South Africa Series), Art First, London
	Graphic Works, Graphic Studio Gallery, Dublin.
	Landscape Prints, Edinburgh Printmakers Workshop
1998	Lammermuir, The Scottish Gallery, Edinburgh
	Edinburgh The Festival City, Galleri Galtung, Oslo 1999
1999	Painted Desert, Art First, London
2000	West, The Scottish Gallery, Edinburgh
2001	Zuma Beach, Art First, London
2002	Paintings from Ireland, Art First, London
2003	Travelog, Glasgow Print Studio
	An-tiarthar – the West, The Scottish Gallery, Edinburgh

2004	New Paintings, Tom Caldwell Gallery, Belfast
2005	Barbara Rae Monotypes, The Scottish Gallery
	New Paintings, Adam Gallery, London
2006	New Small Paintings, Adam Gallery, London
2008	Barbara Rae RA, Adam Gallery, London
2009	'Vignettes' from Ireland, Adam Gallery, London
	Graphic Works, Adam Gallery, London
	Recent Paintings, Richmond Hill Gallery, London
2010	Barbara Rae RA: Prints, Sir Hugh Casson Room, Royal Academy, London
	'Celtic Connections' Adam Gallery, London
2011	Celtic Connections: Invited Artist, Trinity Hall, Cambridge
2011	Barbara Rae RA: Sketchbooks, Adam Gallery, London

Selected Bibliography

Lambirth, Andrew and Wardell, Gareth, Barbara Rae RA: Prints, The Royal Academy of Arts, London, 2010
Hare, Bill, Lambirth, Andrew and Wardell, Gareth, Barbara Rae, Lund Humphries, London, 2008
Richard Cork, Gareth Wardell, Barbara Rae Sketchbooks, The Royal Academy of Arts, London, 2011
These books available from Adam Gallery

Auty, Giles, 'Barbara Rae, The Spanish Paintings', The Spectator, 13 October 1990
Beaumont, Mary Rose, Barbara Rae, Edinburgh Festival Exhibition, exh.cat., The Scottish Gallery, Edinburgh, 1995
Beckett, Sister Wendy, Contemporary Women Artists, Phaidon Press, London, 1988, pp 90, 91
Bertram, Geoffrey, Barbara Rae, Edinburgh: The Festival City, exh.cat., Galleri Galtung, Oslo, 1997
Colin, Beatrice, 'Barbara Rae at The Scottish Gallery', The Guardian, 28 August 1995
Finlayson, Iain, Arts Review, 9 November 1984, pp 554, 555
Firth, Jack, Scottish Watercolour Painting, Ramsay Head Press, Scotland, 1979, pp 66, 67
Gage, Edward, 'Darkling Vision of Barbara Rae', The Scotsman, 8 October 1979
Hall, Douglas, 'Tonal Intimacy', Scotland on Sunday, 9 October 1988
Hare, Bill, Contemporary Painting in Scotland, Craftsman House, 1992, pp 178–81
Henry, Clare, Lammermuir, exh.cat., The Scottish Gallery, Edinburgh, 1997
Jacques, Richard, 'Opulent Evocations of the Spanish Uplands', The Scotsman, 14 November 1990
Kerr, Sally, 'Natural Feelings of Landscape', The Scotsman,15 August 1995
Lambirth, Andrew, Royal Academy Magazine, no.64, Autumn 1999
Mackechnie, John, Barbara Rae, Graphic Works, exh.cat., Glasgow Print Studio, 1997
Macmillan, Duncan, Scottish Art in the 20th Century, Mainstream, Edinburgh, 1994, pp 115–6
Mitchell, Nicola, Barbara Rae, Paintings in Spain, exh.cat., The Scottish Gallery, ARCO '90, Madrid, 1990
Packer, William, 'Scots Show their True Colours, Financial Times, 14 November 1999
Russell Taylor, John, Scottish Contemporary Art in Washington and London, exh.cat.,V. N. Gallery, Washington, 1983
Smith, W. Gordon, 'Solo High Point', Scotland on Sunday, 16 July 1995 n

